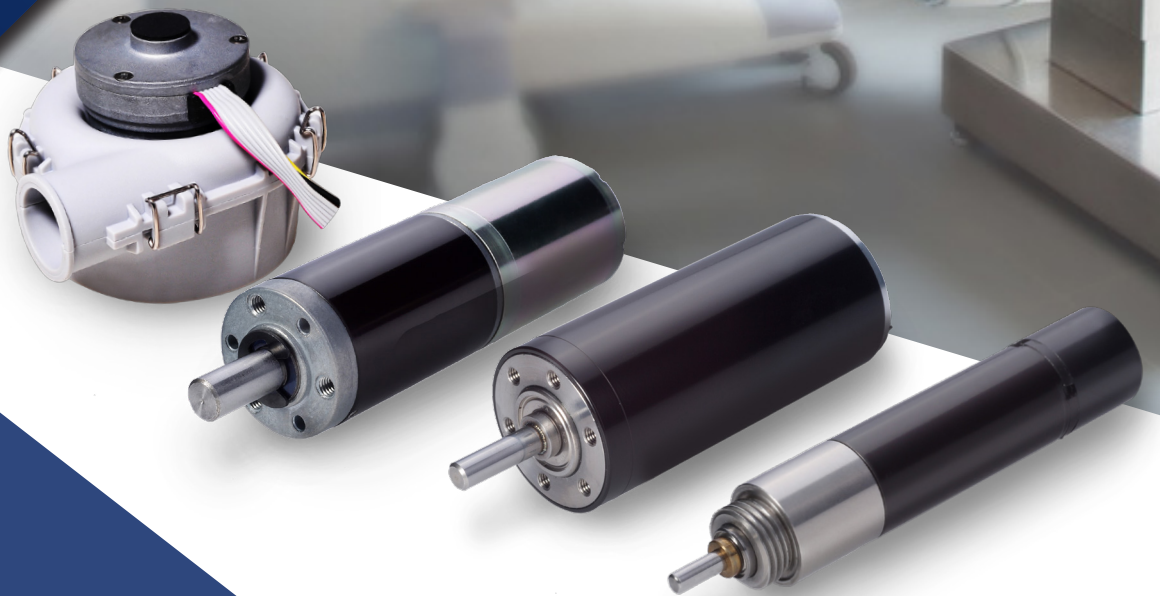


# Constar

您可靠的医疗传动合作伙伴  
YOUR RELIABLE PARTNER  
OF MEDICAL MOTION PRODUCTS

## 2022



[www.constarmotor.com](http://www.constarmotor.com)



# CONTENT 目录

## COMPANY PROFILE 公司简介

COMPANY PROFILE 公司简介 .....	02
R&D STRENGTH 研发能力 .....	03
SUPERFINE MANUFACTURING 精工制造 .....	04
QUALITY ASSURANCE 品质保证 .....	05

## PRODUCTS & SERVICE 产品和服务

PRODUCTS & SERVICE 产品和服务 .....	06
MEDICAL PUMP MOTOR 医疗泵电机 .....	07
INSULIN PUMP MOTOR 胰岛素泵电机 .....	07
DIAPHRAGM PUMP MOTOR 隔膜泵电机 .....	08
INFUSION PUMP MOTOR 输液泵电机 .....	09
INJECTION PUMP MOTOR 注射泵电机 .....	10
RESPIRATOR MOTOR & BLOWER 呼吸机电机 / 风机 .....	11
BREATHING MASK MOTOR 呼吸面罩电机 .....	12
SURGICAL INSTRUMENT MOTOR 外科手术设备电机 .....	13
SURGICAL ELECTRIC SAW / DRILL / REAMER MOTOR 手术电锯 / 电钻 / 铰刀电机 .....	13
SURGICAL ROBOTIC MOTOR 外科手术机器人电机 .....	14
MULTI-LEAF COLLIMATOR MOTOR 多叶准直器电机 .....	15
INTELLIGENT ARTIFICIAL LIMB MOTOR 智能假肢电机 .....	16
LABORATORY ANALYSIS DEVICE MOTOR 化验分析设备电机 .....	17
BLOOD ANALYZER MOTOR 血液分析仪电机 .....	17
CENTRIFUGE MOTOR 离心机电机 .....	18
PIPETTE MOTOR 移液器电机 .....	19
MEDICAL COSMETOLOGY APPARATUS MOTOR 医疗美容仪电机...	20
CRYSTALLINE LENS TESTER MOTOR 晶状体测试仪电机 .....	21
OTHER MEDICAL APPLICATIONS 其他医疗应用 .....	22

## CONTACT 联系方式

CONTACT 联系方式 .....	24
--------------------	----

# COMPANY PROFILE

## 公司简介

Constar 创建于 2000 年，是提供一体化的微电机产品与解决方案的民营高科技企业。公司位于深圳市光明区，拥有深圳光明区、重庆涪陵区两大生产基地，产品广泛应用于医疗器械、汽车、工业自动化、机器人、无人机、智能家居、安防设备等领域，畅销国际国内市场，以其出色的可靠性赢得客户好评。

Constar, founded in 2000 and located in Guangming District, Shenzhen, is a private high-tech enterprise which focuses on providing integrated micromotor products and related solutions. It has two production bases in Guangming District of Shenzhen and Fuling District of Chongqing. Of which, micromotors and solutions are widely used in medical treatment and health care, automobiles, industry automatization, robotics, UAV, smart homes, security devices, etc. We are in great demand among both international and domestic markets, and have received high praise from our customers with excellent reliability.



### 深圳市德达兴驱动科技有限公司

位于深圳市光明区

#### Constar Motion Co.,Ltd

Located in Guangming District, Shenzhen, China

>>>

### 深圳市仓兴达科技有限公司

位于深圳市福田区

#### Constar Micromotor Co.,Ltd

Located in Futian District, Shenzhen, China

### 重庆市仓兴达科技有限公司

位于重庆市涪陵区

#### Constar micromotor (Chongqing) Co., Ltd

Located in Fuling District, Chongqing, China

### KOCO DC-MOTION, Inc.

位于美国加州核桃市 (洛杉矶)

#### KOCO DC-MOTION, Inc.

Located in Walnut, CA(LA County), U.S.A.



## R&D STRENGTH

### 研发能力

Constar 荟萃电机行业资深专家及青年才俊，拥有与著名高等院校合作的研发团队，装备了先进的研发试验设施，获得 60 多项专利授权，以深厚的技术力量为客户开发微电机产品和驱动方案，从设计源头为产品零缺陷提供保障。

Constar has acquired both senior experts and young talents from motor industry, occupying our own R&D teams cooperating with famous higher educational institutions. We are also equipped with advanced experiment facilities and have been awarded more than 60 patents. Furthermore, we aim at developing micromotor products and derive solutions for our customers with profound technical strength as well as ensuring zero faults in production from the design source.



国家高企证书 Certificate



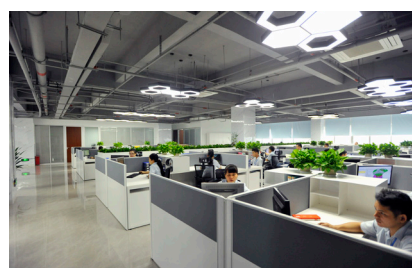
消音室 Anechoic Room



实验室 Laboratory



开发技术部办公室 R&D Office



## SUPERFINE MANUFACTURING 精工制造

Constar 拥有经验丰富的技术工人，建立了高洁净车间，投入高精度、高效率的自动化 / 半自动化设备，确保量产产品质量稳定。

Constar occupies experienced technical workers. We have established clean workshops and also invested automatic and semi-automatic equipment with high precision and high efficiency to guarantee the stability of our mass produced motors.



# QUALITY ASSURANCE

## 品质保证

Constar 不遗余力地苛求产品品质，按 IATF16949 标准建立了完整而卓有成效的质量保证体系，每台产品从进料到出货历经数十道工序严格检验，确保客户可放心使用。

Constar strictly adheres to high product quality and has established a thorough and effective quality assurance system in accordance with IATF16949 Standard. Each of our products is tightly inspected via dozens of procedures from feedstock to shipment so that our customers can use the product safely.



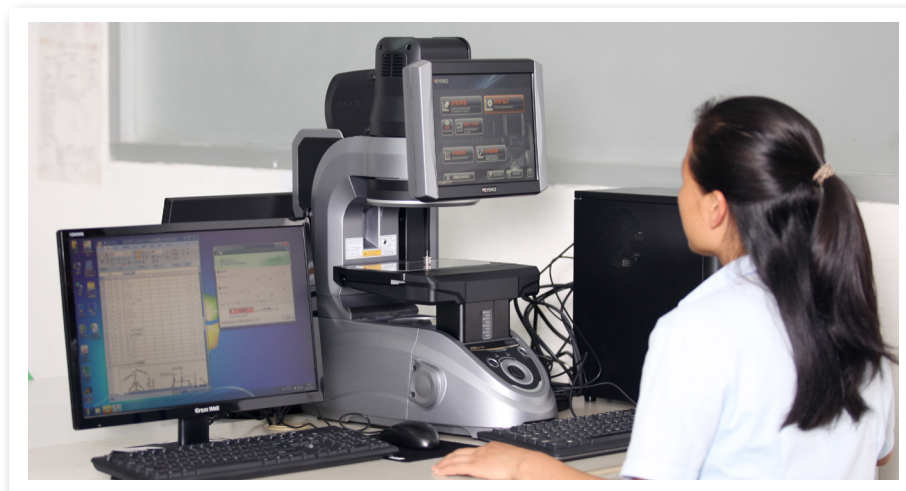
ISO9001 证书  
ISO9001 Certificate



IATF16949 证书  
IATF16949 Certificate



硬度计  
Hardness Tester



图像尺寸测量仪  
Image Dimension Measuring System

## PRODUCTS & SERVICE

### 产品和服务

Constar 拥有丰富的产品线，包括精密直流空心杯电机、无刷电机、精密齿轮减速电机、精密伺服电机等系列。我们的产品成功应用于医疗泵、呼吸机、外科手术设备、多叶准直器、智能假肢、化验分析设备等众多医疗器械领域，以其出色的可靠性赢得客户好评。

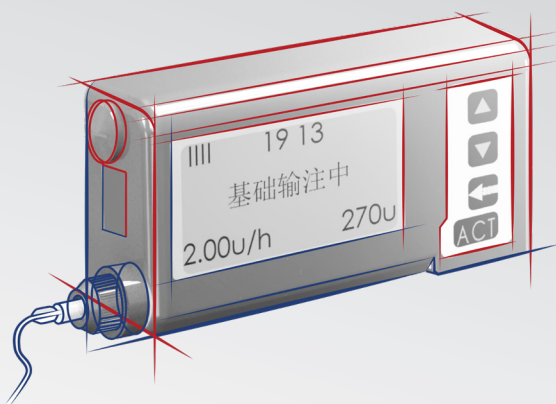
Constar occupies full range of products, including series such as precision DC coreless motor, brushless DC motor, precision gearmotor, precision servo motor, etc. Our products are successfully applied to numerous fields of medical devices like medical pump, respirator, surgical instrument, multi-leaf collimator, intelligent artificial limb, laboratory analysis equipment, etc. and have won great praise from our customers with excellent reliability.

我们坚持以客户业务要求及产品应用要求为起点，组建了7个专业研发项目团队，与客户共同开发量身定制的个性化解决方案，帮助客户产品在市场上脱颖而出。

Starting out with our customers' business demands and products' application requirements, we have constructed 7 professional R&D project teams to jointly develop tailored personalized solutions with our customers to help their products win out among various products in the market.

## MEDICAL PUMP MOTOR

### 医疗泵电机



## INSULIN PUMP MOTOR

### 胰岛素泵电机

Constar 胰岛素泵电机设计精巧、结构紧凑，精度高、误差小，有助于胰岛素泵实现小体积、精确稳定地输注。

Constar's insulin pump motor is exquisitely designed, with a compact structure, high precision and small error, also conducive to the realization of small-sized, precise and stable infusion.

#### 产品选择

#### Product Selection

#### 驱动电机

#### Driving Motor

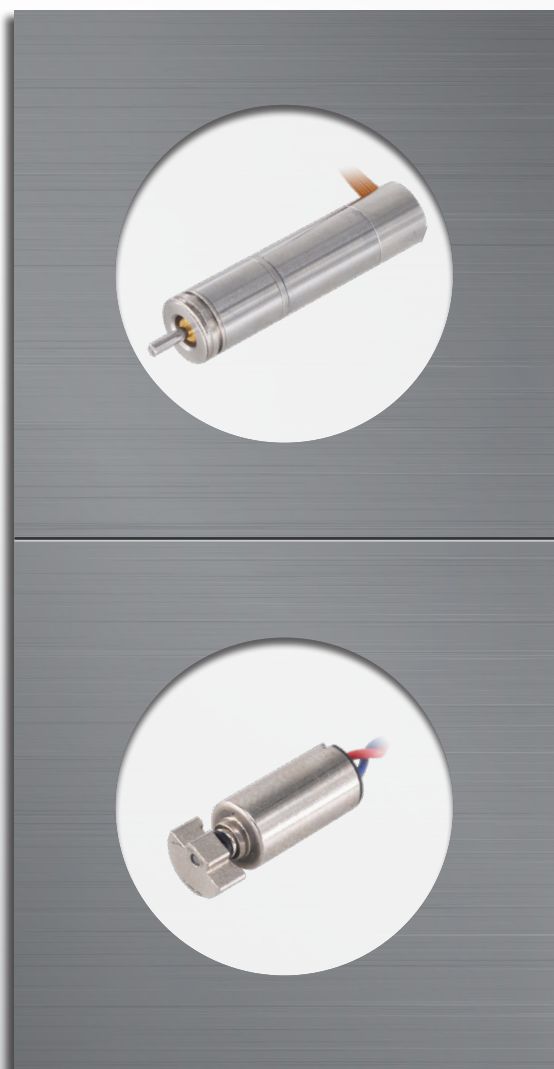
电机 Motor	尺寸 Dimension (mm)	技术 Technology	电压 Voltage (V)	连续运行 Continuous Operation			位置控制 Positioning Control
				最大扭矩 Max. Torque (mNm)	最高转速 Max. Speed (rpm)	最大电流 Max. Current (mA)	
0816N5M	φ8*16.2	有刷直流 Brush DC	3.0	0.57	2500	145	磁电编码器 Magnetic Encoder 16,32,64 cpt

齿轮箱 Gearbox	直径 Diameter (mm)	长度 Length (mm)	类型 Type	减速比 Reduction Ratio	最大连续转 矩 Max. Cont. Torque (mNm)	峰值转矩 Peak Torque (mNm)
08MP	φ8	9.1~19.9	行星齿轮 Planetary	4~1024	5/35	15/105
08PP	φ8	12.1~16.9	行星齿轮 Planetary	13~809	10/30	30/90

#### 振动电机

#### Vibrating Motor

电机 Motor	尺寸 Dimension (mm)	技术 Technology	电压 Voltage (V)	端电阻 Terminal Resistance (Ω)	电流 Current (mA)	转速 Speed (rpm)
VL0408N3M	φ4*8	有刷直流 Brush DC	3.0	32	70	15000
VL0408N3M	φ4*8	有刷直流 Brush DC	1.5	15.5	65	13500

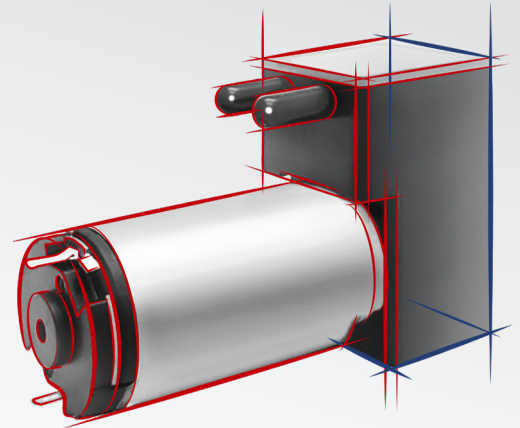


# DIAPHRAGM PUMP MOTOR

## 隔膜泵电机

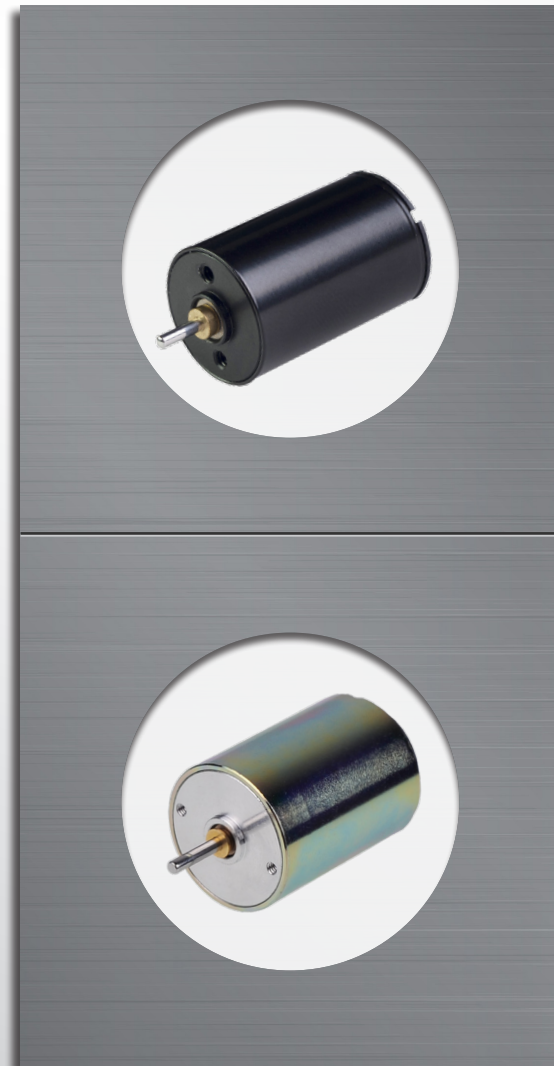
Constar 隔膜泵用精密直流空心杯电机，具有结构紧凑、寿命长等特点，稀有金属换向系统可以有效提高电机的可靠性，能保障隔膜泵长时间稳定负载运行。

Constar's diaphragm pump motor applies precision DC coreless motor, characterized by a compact structure and long service life, etc., with its precious metal commutation to effectively improve the motor's reliability so as to guarantee the long-time stable on-load operation of the diaphragm pump.



### 产品选择 Product Selection

电机 Motor	尺寸 Dimension (mm)	技术 Technology	电压 Voltage (V)	连续运行 Continuous Operation		
				最大转矩 Max. Torque (mNm)	最高转速 Max. Speed (rpm)	最大电流 Max. Current (mA)
1220N5M2B	φ12*21	有刷直流 Brush DC	3.3	1.5	2200	370
1230N5M	φ12.4*30.9	有刷直流 Brush DC	24.0	1.8	8000	90
1625N5M	φ16*25.2	有刷直流 Brush DC	12.0	2.3	9120	240
1630N5M2B	φ16*30	有刷直流 Brush DC	12.0	1.6	11500	195
2232N9M	φ22*31.6	有刷直流 Brush DC	9.0	3.6	8000	400

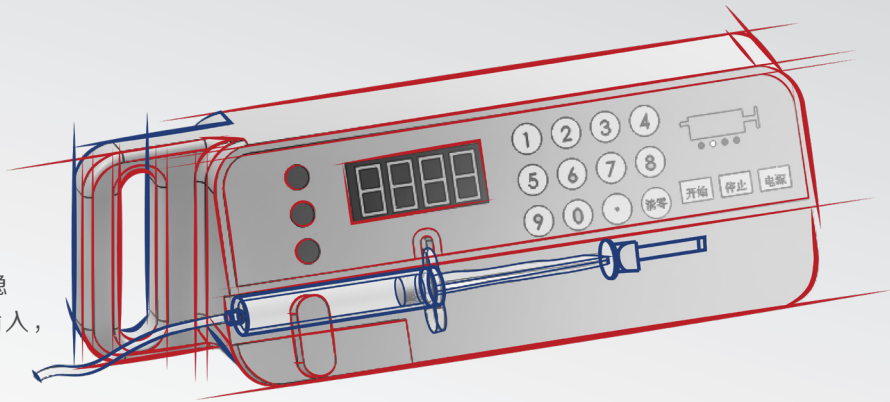




# INJECTION PUMP MOTOR

## 注射泵电机

Constar 注射泵用电机结构紧凑、尺寸精密、性能稳定，有助于注射泵实现微型尺寸、精确控制药物输入，深受客户好评。



Constar's injection pump motor is equipped with a compact structure, precise size as well as stable performance - all these are conducive to the injection pump's micro-size and precise control of medicine injection. It is deeply received by the customers.

### 产品选择

### Product Selection

电机 Motor	尺寸 Dimension (mm)	技术 Technology	电压 Voltage (V)	连续运行 Continuous Operation		
				最大转矩 Max. Torque (mNm)	最高转速 Max. Speed (rpm)	最大电流 Max. Current (mA)
L0612N5M	φ6*12.2	有刷直流 Brush DC	3.0	0.17	20000	30
C1019...10PP...	φ10*19.5	齿轮减速电机 Gearmotor	2.5	10.0	80	220
C1222...12PP...	φ12*22.2	齿轮减速电机 Gearmotor	3.5	20.0	80	250
1220N5M2B	φ12*21	有刷直流 Brush DC	3.3	0.5	5700	140
1230N5M	φ12*30	有刷直流 Brush DC	12.0	2.0	4600	130
1515N5M	φ12*15	有刷直流 Brush DC	9.0	1.0	6820	130
1620N5M	φ16*20	有刷直流 Brush DC	3.0	1.0	26300	220

齿轮箱 Gearbox	尺寸 Dimension (mm)		类型 Type	减速比 Reduction Ratio	最大连续 转矩 Max. Cont. Torque (mNm)	峰值扭矩 Peak Torque (mNm)
15MS	φ15.5	11	正齿轮 Spur	3~360	20/80	60/240
16MP	φ16	15.05~29.65	行星齿轮 Planetary	4~3027	80/240	240/720

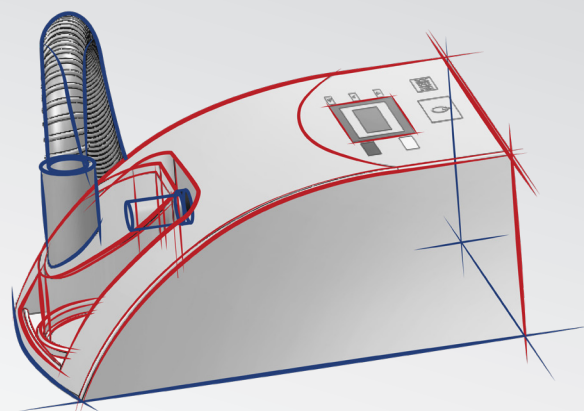


## RESPIRATOR MOTOR & BLOWER

### 呼吸机电机 / 风机

Constar呼吸机用无刷电机/无刷风机，结构设计合理、风压稳定、寿命长、噪音低，能确保呼吸机的使用安全、可靠，是多家客户的长期选择。

Constar's brushless blower and brushless motor used for respirator, are reasonably designed and characterized by stable wind pressure, long service lifetime and low noise so as to ensure a respirator's safe and reliable use, becoming multiple customers' long-term choice.



#### 推荐产品

Recommended Products

#### 无刷电机（不含蜗壳、叶轮）

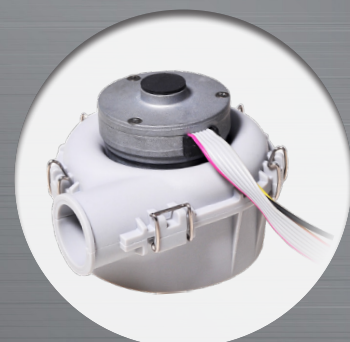
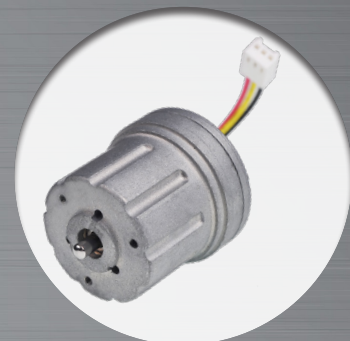
##### Brushless Motor (Without Volute Casing And Impeller)

电机 Motor	尺寸 Dimension (mm)	技术 Technology	电压 Voltage (V)	连续运行 Continuous Operation		
				最大转矩 Max. Torque (mNm)	最高转速 Max. Speed (rpm)	最大电流 Max. Current (mA)
BH2245NH2B	φ22*45	无刷直流 BLDC	24.0	11	37650	2100
B4040NH2B	φ40*39.5	无刷直流 BLDC	24.0	6.5	36000	1380

#### 无刷风机

##### Brushless Blower

风机 Blower	尺寸 Dimension (mm)	技术 Technology	电压 Voltage (V)	风压 Air Pressure (Pa)	流量 Air Flow (m³/h)	噪音 Noise (dB)
6548ZWF	φ65*48	无刷直流 BLDC	24.0	10000	7.6	≤38
7054ZWF	φ71.4*52.5	无刷直流 BLDC	24.0	3530	4.4	≤35

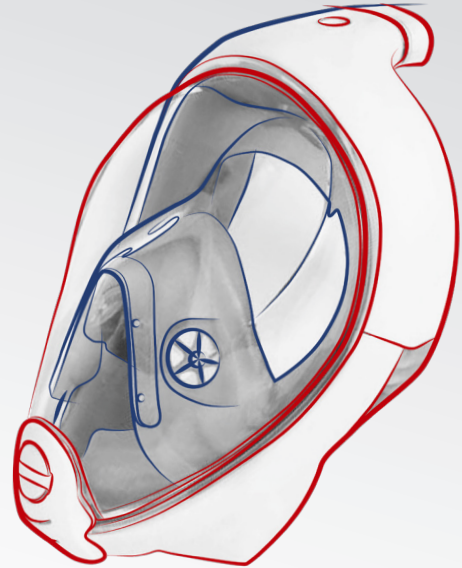


# BREATHING MASK MOTOR

## 呼吸面罩电机

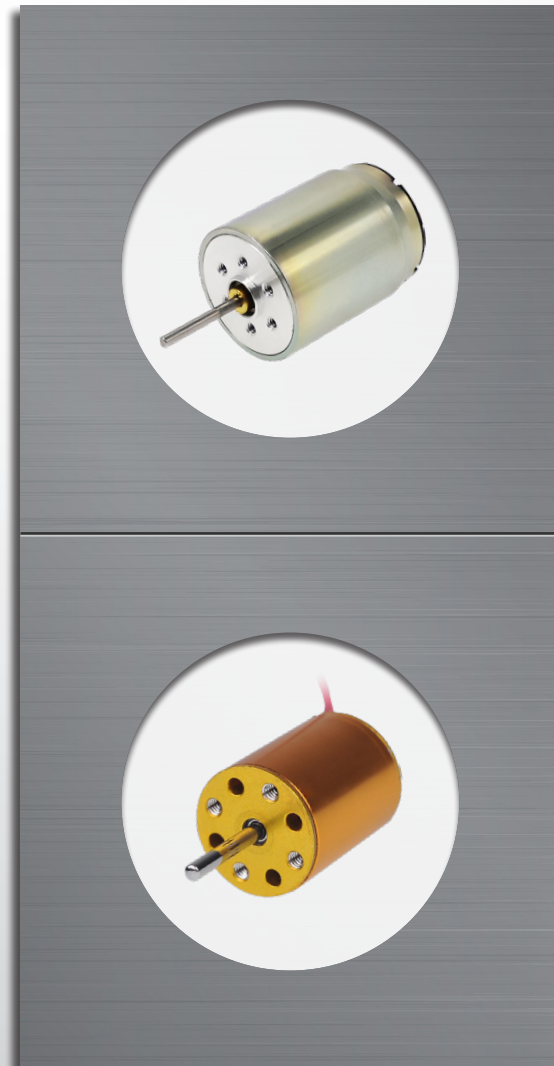
Constar 呼吸面罩电机，结构设计合理、体积小、寿命长、噪音低、重量轻，可使呼吸面罩更加便携、舒适，深受客户欢迎。

Constar breathing mask motor have rational and compact structural design, long service life, low noise, and lightweight structure, making the breathing masks easier to carry and comfortable to wear. Therefore, breathing masks with Constar motors are very popular among customers.



### 产品选择 Product Selection

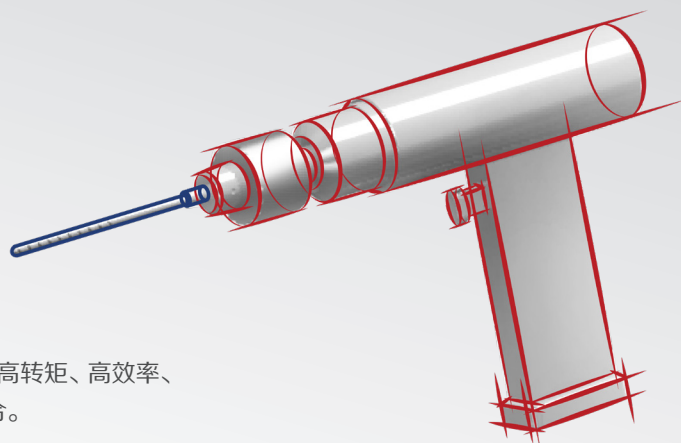
电机 Motor	尺寸 Dimension (mm)	技术 Technology	电压 Voltage (V)	连续运行 Continuous Operation		
				最大转矩 Max. Torque (mNm)	最高转速 Max. Speed (rpm)	最大电流 Max. Current (mA)
1625N9M	φ16*25	有刷直流 Brush DC	3.0	1.0	9750	460
1925N9M	φ19*25	有刷直流 Brush DC	6.0	4.0	5310	510
2232N5M	φ22*31.6	有刷直流 Brush DC	6.0	5.0	5800	700
2433N5M2B	φ24*32.8	有刷直流 Brush DC	4.5	5.5	7800	1000
B1215N2B	φ12*15	无刷直流 BLDC	3.6	0.3	29000	850



# SURGICAL INSTRUMENT MOTOR

## 外科手术设备电机

### SURGICAL ELECTRIC SAW / DRILL / REAMER MOTOR 手术电锯 / 电钻 / 铰刀电机



Constar 为手术切割类器械精心设计了带空心杯线圈的电机，产品具有高转矩、高效率、良好的动 / 静态调速特性，适用于从锯切到钻孔、扩孔的各种应用场合。

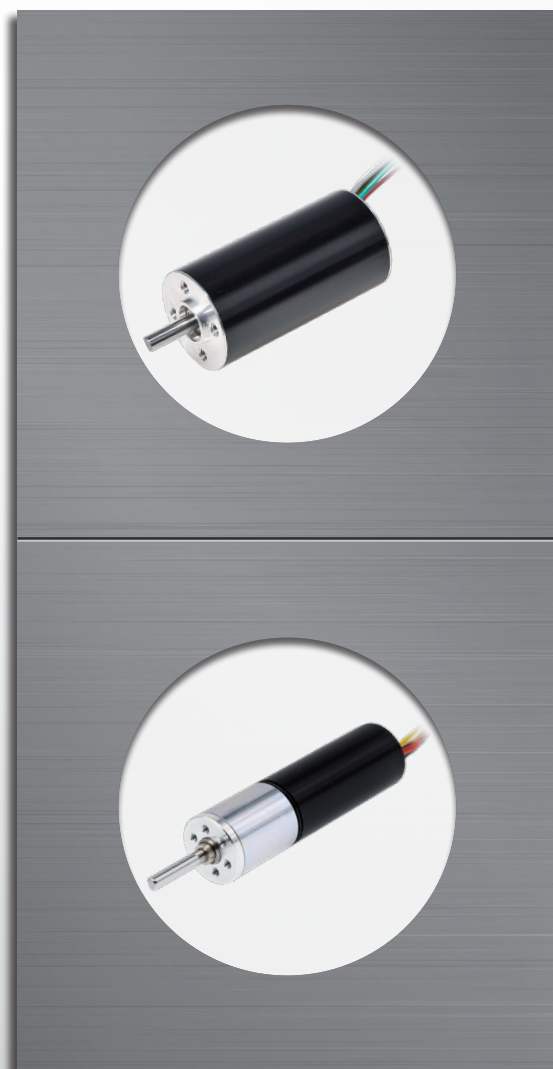
Constar exquisitely designs a kind of motor with coreless windings for surgical cutting devices. Such product is characterized by high-torque, high-effective, excellent dynamic/static speed regulation properties, applicable to various situations ranging from sawing to drilling and reaming.

#### 产品选择

#### Product Selection

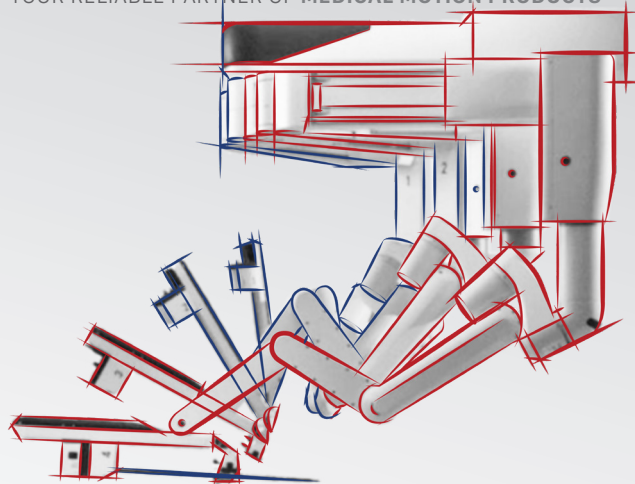
电机 Motor	尺寸 Dimension (mm)	技术 Technology	电压 Voltage (V)	连续运行 Continuous Operation		
				最大转矩 Max. Torque (mNm)	最高转速 Max. Speed (rpm)	最大电流 Max. Current (mA)
1331N5M	φ13*31.5	有刷直流 Brush DC	4.8	2.0	22000	1000
2233N5M2B	φ22*33.2	有刷直流 Brush DC	16.0	1.8	17450	265
B1635NH2B	φ16*35	无刷直流 BLDC	4.0	1.5	10000	500
B2040N2B	φ20*40	无刷直流 BLDC	24.0	9.6	42000	2500
B2950NH2B	φ29*50	无刷直流 BLDC	28.0	22	15000	1700

齿轮箱 Gearbox	直径 Diameter (mm)	长度 Length (mm)	类型 Type	减速比 Reduction Ratio	最大连续转 矩 Max. Cont. Torque (mNm)	峰值扭矩 Peak Torque (mNm)
12MP	φ12	15.3~28.5	行星齿轮 Planetary	4~1024	80/200	240/600
13MP	φ13	12.7~25.9	行星齿轮 Planetary	4~1024	80/200	240/600
16MP	φ16	15.05~29.65	行星齿轮 Planetary	4~3027	80/240	240/720
22MP	φ22	23.3~48.1	行星齿轮 Planetary	5~3968	100/600	300/1800
28MP	φ28	24.5~43.7	行星齿轮 Planetary	4~939	200/1000	600/3000



# SURGICAL ROBOTIC MOTOR

## 外科手术机器人电机



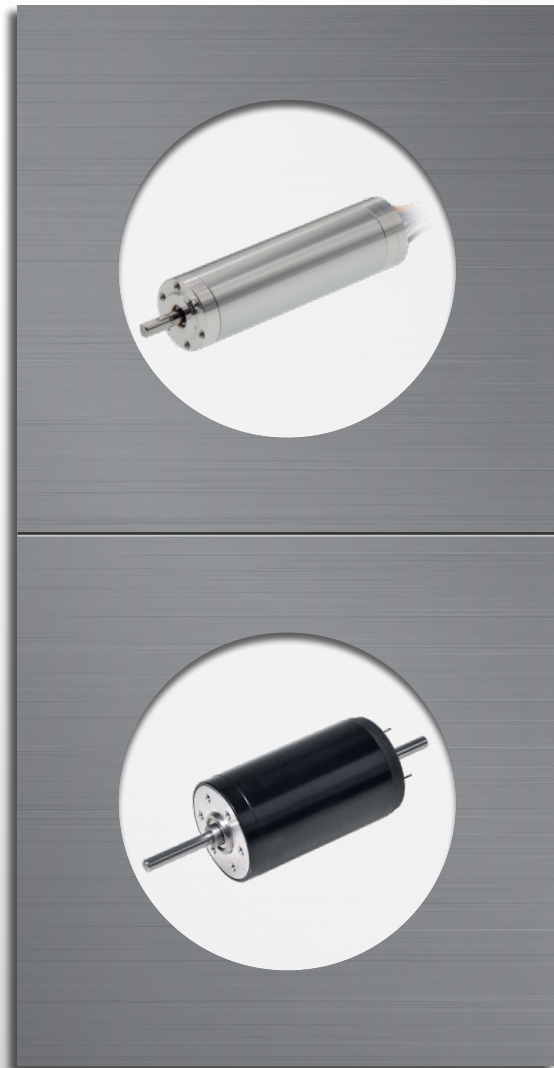
Constar 手术机器人电机采用空心杯线圈结构，无齿槽效应，具有高转速、高扭矩、高精度、响应快等特性，能实现位置精确控制，满足机器人精确而复杂的运动需求。

Constar surgical robotic motor adopts coreless winding structure and features no slot effect, characterized by high speed, high torque, high precision, fast response speed, etc. so as to realize precise location control and satisfy a robot's accurate and complicated movement requirements.

### 产品选择 Product Selection

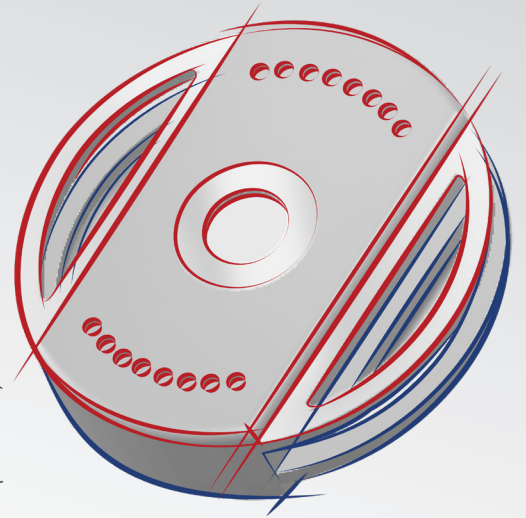
电机 Motor	尺寸 Dimension (mm)	技术 Technology	电压 Voltage (V)	连续运行 Continuous Operation			位置控制 Positioning Control
				最大转矩 Max. Torque (mNm)	最高转速 Max. Speed (rpm)	最大电流 Max. Current (mA)	
BH0831NH	φ8*31	无刷直流 BLDC	8.5	1.3	25280	670	磁电编码器 Magnetic Encoder 2~1024 cpt
BH1659NH2B	φ16*59	无刷直流 BLDC	32.0	8.6	39000	1300	
BH1660NH2B	φ16*60	无刷直流 BLDC	36.0	11.5	62000	2300	
BH2260NH2B	φ22*59.7	无刷直流 BLDC	24.0	17.2	51700	4400	
1331N5M	φ13*31.5	有刷直流 Brush DC	9.0	3.4	4280	280	
2543N9C2B	φ25*43.5	有刷直流 Brush DC	24.0	8.4	6070	255	

齿轮箱 Gearbox	直径 Diameter (mm)	长度 Length (mm)	类型 Type	减速比 Reduction Ratio	最大连续转矩 Max. Cont. Torque (mNm)	峰值扭矩 Peak Torque (mNm)
12MP	φ12	15.3~28.5	行星齿轮 Planetary	4~1024	80/200	240/600
13MP	φ13	12.7~25.9	行星齿轮 Planetary	4~1024	80/200	240/600
25MP	φ25	18.3~42.4	行星齿轮 Planetary	3.6~1386	300/1000	900/3000



## MULTI-LEAF COLLIMATOR MOTOR

### 多叶准直器电机



Constar 多叶准直器电机功率密度高、响应速度快，可以减少叶片行程时间；配以高分辨率编码器，能帮助叶片精准定位。

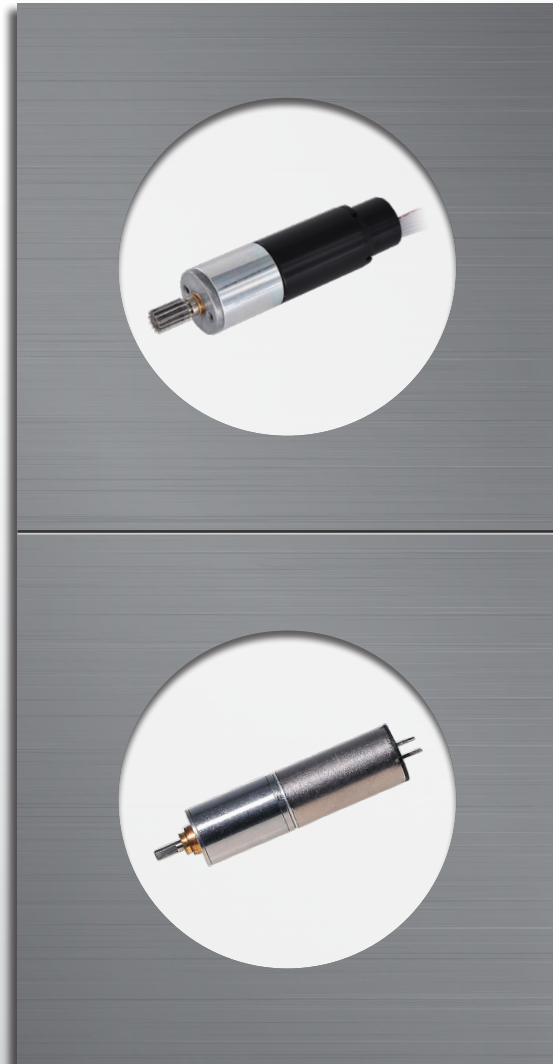
With a high-power density and fast response speed, Constar's multi-leaf collimator motor can reduce the leaf blade's operating time, which, together with high resolution encoder, can help with the leaf's precise localization.

#### 产品选择

#### Product Selection

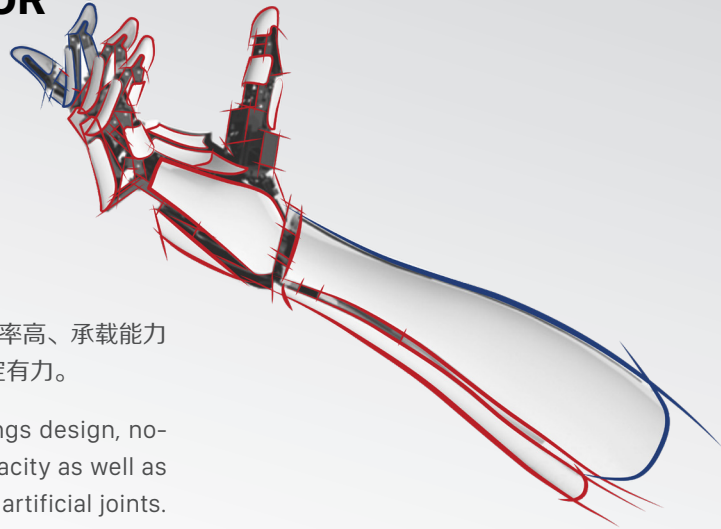
电机 Motor	尺寸 Dimension (mm)	技术 Technology	电压 Voltage (V)	连续运行 Continuous Operation			位置控制 Positioning Control
				最大扭矩 Max. Torque (mNm)	最高转速 Max. Speed (rpm)	最大电流 Max. Current (mA)	
1025N5M	φ10*24	有刷直流 Brush DC	12.0	1.2	7780	160	磁电编码器 Magnetic Encoder 2~1024 cpt
1030N5M	φ12.4*30.9	有刷直流 Brush DC	12.0	1.5	10000	155	
1625N5M	φ16*25.2	有刷直流 Brush DC	24.0	2.1	9300	110	

齿轮箱 Gearbox	直径 Diameter (mm)	长度 Length (mm)	类型 Type	减速比 Reduction Ratio	最大连续转矩 Max. Cont. Torque (mNm)	峰值扭矩 Peak Torque (mNm)
10MP	φ10	11.7~24.1	行星齿轮 Planetary	4~1024	5/50	15/150
12MP	φ12	15.3~28.5	行星齿轮 Planetary	4~1024	80/200	240/600
16MP	φ16	15.05~29.65	行星齿轮 Planetary	4~3027	80/240	240/720



# INTELLIGENT ARTIFICIAL LIMB MOTOR

## 智能假肢电机



Constar 智能假肢电机采用空心杯线圈设计，无顿转转矩、重量轻、效率高、承载能力大、易于控制，能满足假肢关节多种动作需要，使用者操作自然、稳定有力。

Constar's intelligent artificial limb motor features coreless windings design, no-cogging torque, light weight, high efficiency, high supporting capacity as well as high controllability, capable of various movement requirements of artificial joints. Such design enables the users to naturally, stably and powerfully operate the product.

### 产品选择 Product Selection

电机 Motor	尺寸 Dimension (mm)	技术 Technology	电压 Voltage (V)	连续运行 Continuous Operation		
				最大转矩 Max. Torque (mNm)	最高转速 Max. Speed (rpm)	最大电流 Max. Current (mA)
8.520N7M	φ8.5*20	有刷直流 Brush DC	8.0	0.3	28300	150
1025N5M	φ10*24	有刷直流 Brush DC	12.0	1.2	9500	150
1220N5M	φ12*21	有刷直流 Brush DC	12.0	1.8	6270	190
2224N5M	φ22*24.2	有刷直流 Brush DC	6.0	2.7	7430	435
B1220N2B	φ12*20	无刷直流 BLDC	7.4	2	14600	600

齿轮箱 Gearbox	直径 Diameter (mm)	长度 Length (mm)	类型 Type	减速比 Reduction Ratio	最大连续转矩 Max. Cont. Torque (mNm)	峰值扭矩 Peak Torque (mNm)
10MP	φ10	11.7~24.1	行星齿轮 Planetary	4~1024	5/50	15/150
12MP	φ12	15.3~28.5	行星齿轮 Planetary	4~1024	80/200	240/600
22MP	φ22	23.3~48.1	行星齿轮 Planetary	5~3968	100/600	300/1800



## LABORATORY ANALYSIS DEVICE MOTOR

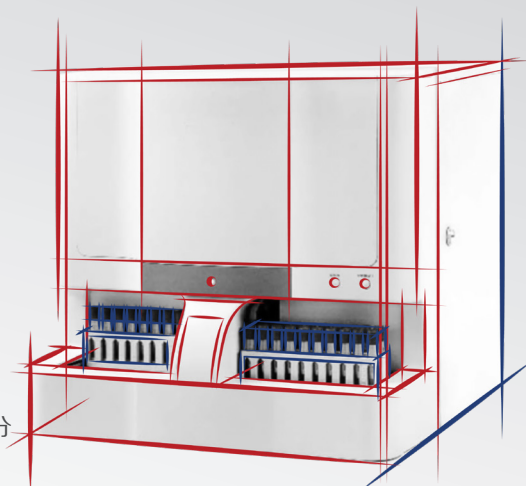
### 化验分析设备电机

## BLOOD ANALYZER MOTOR

### 血液分析仪电机

Constar 为血液分析仪机械系统设计了步进电机、伺服电机等多种解决方案，可帮助分析仪实现自动装载、精确定位，并保证系统的长寿命和高可靠性。

Constar designs diverse solutions for the blood analyzer's mechanical system such as step motor, servo motor, etc. to help the analyzer to achieve autoloader, precise localization and ensure the system's long lifetime and high reliability.

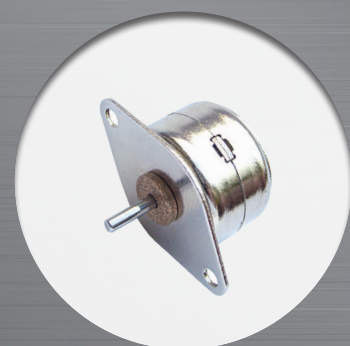


#### 产品选择

#### Product Selection

电机 Motor	尺寸 Dimension (mm)	技术 Technology	电压 Voltage (V)	连续运行 Continuous Operation			位置控制 Positioning Control
				最大转矩 Max. Torque (mNm)	最高转速 Max. Speed (rpm)	最大电流 Max. Current (mA)	
1511P0209	φ15*11	步进电机 Step Motor	5.0	1.5	1800	300	20 或 40 步 / 圈 20 or 40 Step/rev.
1625N5M	φ16*25.6	有刷直流 Brush DC	12.0	1.6	11700	280	磁电编码器 Magnetic Encoder 2~1024 cpt
2224N5M2B	φ22*24.2	有刷直流 Brush DC	9.0	2.6	7830	300	
BS2838NB2B	φ27.6*37.6	有刷直流 Brush DC	24.0	10	7300	500	--

齿轮箱 Gearbox	直径 Diameter (mm)	长度 Length (mm)	类型 Type	减速比 Reduction Ratio	最大连续 转矩 Max. Cont. Torque (mNm)	峰值扭矩 Peak Torque (mNm)
16MS	φ15.5	11	正齿轮 Spur	3~360	20/80	60/220
16MP	φ16	15.05~29.65	行星齿轮 Planetary	4~3027	80/240	240/720
22MP	φ22	23.3~48.1	行星齿轮 Planetary	5~3968	100/600	300/1800

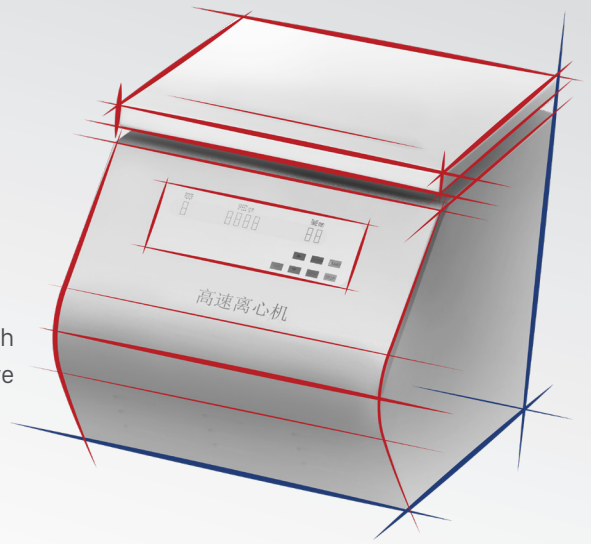


# CENTRIFUGE MOTOR

## 离心机电机

Constar 为离心机设计的无刷电机，力矩大、转速高、免维护，可以帮助离心机提高分离因数，降低维护成本。

Constar's brushless motor designed for the centrifuge is characterized by high torque, high rotational speed and maintenance free. It's used to help improve the centrifuge's separation factor and reduce the maintenance cost.



### 产品选择 Product Selection

电机 Motor	尺寸 Dimension (mm)	技术 Technology	电压 Voltage (V)	连续运行 Continuous Operation		
				最大转矩 Max. Torque (mNm)	最高转速 Max. Speed (rpm)	最大电流 Max. Current (mA)
BO2821N2B	φ28*21	无刷直流 BLDC	12.0	65	3400	3500
BO2826N2B	φ28*26.6	无刷直流 BLDC	24.0	32	5000	1000
BO2828N2B	φ28*27.5	无刷直流 BLDC	12.0	140	9100	1400
B2950NH2B	φ29*50	无刷直流 BLDC	28.0	22	15000	1700

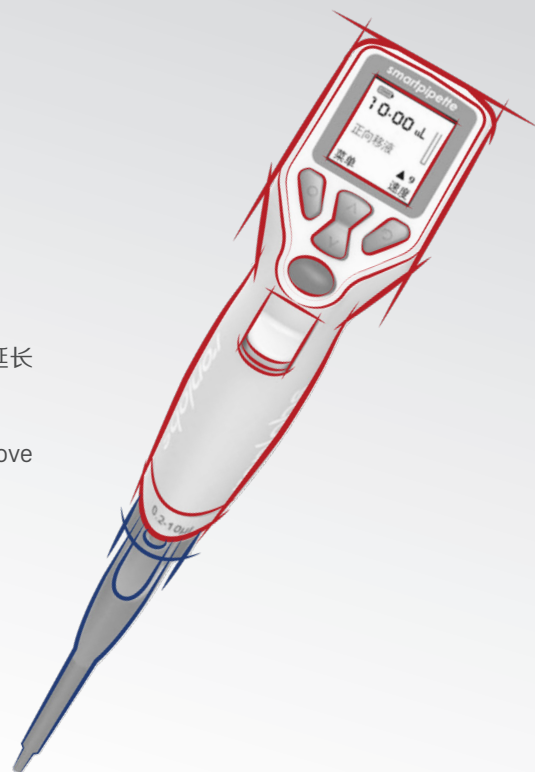


## PIPETTE MOTOR

### 移液器电机

Constar 性能卓越的空心杯电机解决方案，能帮助移液器提高配药速度和精确性，延长续航时间。

Constar's coreless motor with excellent properties can help the pipette to improve its prescription speed as well as its precision and extend the service lifetime.

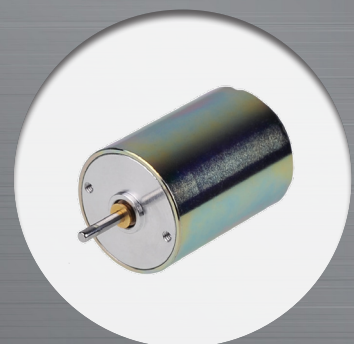


#### 产品选择

#### Product Selection

电机 Motor	尺寸 Dimension (mm)	技术 Technology	电压 Voltage (V)	连续运行 Continuous Operation			位置控制 Positioning Control
				最大扭矩 Max. Torque (mNm)	最高转速 Max. Speed (rpm)	最大电流 Max. Current (mA)	
0816N5M	φ8*16.2	有刷直流 Brush DC	6.0	1.0	5350	300	磁电编码器 Magnetic Encoder 16,32,64 cpt
1230N5M	φ12.4*30.9	有刷直流 Brush DC	6.0	1.3	10920	310	磁电编码器 Magnetic Encoder 2~1024 cpt
1625N5M	φ16*25.2	有刷直流 Brush DC	3.7	1.7	2490	305	
1627N5M	φ16*27	有刷直流 Brush DC	5.0	1.5	5450	220	

齿轮箱 Gearbox	直径 Diameter (mm)	长度 Length (mm)	类型 Type	减速比 Reduction Ratio	最大连续 转矩 Max. Cont. Torque (mNm)	峰值转矩 Peak Torque (mNm)
08MP	φ8	9.1~19.9	行星齿轮 Planetary	4~1024	5/35	15/105
12MP	φ12	15.3~28.5	行星齿轮 Planetary	4~1024	80/200	240/600
16MP	φ16	15.05~29.65	行星齿轮 Planetary	4~3027	80/240	240/720



# MEDICAL COSMETOLOGY APPARATUS MOTOR

## 医疗美容仪电机

Constar 为医疗美容仪设计了多种结构的电机解决方案，产品惯量低、响应速度快、运行平稳，可满足多种医疗美容应用需求。

Constar provides a series of motor solutions for use on various medical cosmetology apparatuses. These Constar motors are featured by low inertia, quick response, smooth operation, and can well satisfy the demands in medical cosmetology industry.



产品选择  
Product Selection

### 驱动电机 Driving Motor

电机 Motor	尺寸 Dimension (mm)	技术 Technology	电压 Voltage (V)	连续运行 Continuous Operation		
				最大转矩 Max. Torque (mNm)	最高转速 Max. Speed (rpm)	最大电流 Max. Current (mA)
1319N5M	φ13*19	有刷直流 Brush DC	12.0	1.0	8600	130
1625N5M2B	φ16*25	有刷直流 Brush DC	6.0	2.0	4650	240
2224N5M	φ22*24	有刷直流 Brush DC	12.0	4.0	6300	300
3068N9C2B	φ30*68	有刷直流 Brush DC	18.0	30.0	8000	1700

齿轮箱 Gearbox	直径 Diameter (mm)	长度 Length (mm)	类型 Type	减速比 Reduction Ratio	最大连续转矩 Max. Cont. Torque (mNm)	峰值转矩 Peak Torque (mNm)
13MP	φ13	12.8~29.1	行星齿轮 Planetary	4~4096	80/200	15/150
16MP	φ16	14~29.6	行星齿轮 Planetary	3.8~2066	200/1200	300/1800
22MP	φ22	23.3~48.1	行星齿轮 Planetary	5~3968	100/600	300/1800

### 振动电机 Vibrating Motor

电机 Motor	尺寸 Dimension (mm)	技术 Technology	电压 Voltage (V)	端电阻 Terminal Resistance (Ω)	电流 Current (mA)	转速 Speed (rpm)
B1215N2B	φ12*15	无刷直流 BLDC	5.0	6.5	450	12000

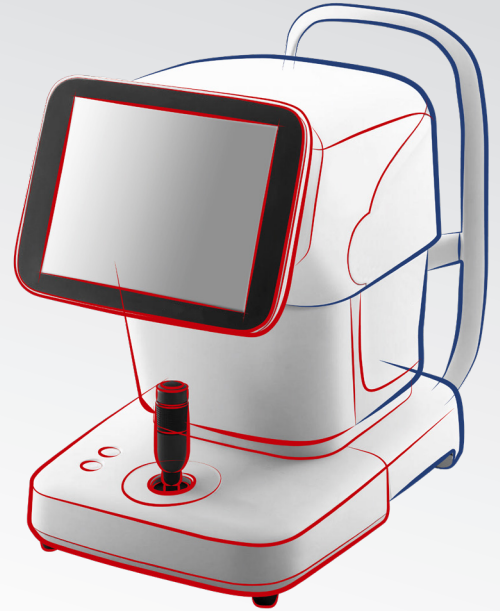


## CRYSTALLINE LENS TESTER MOTOR

### 晶状体测试仪电机

Constar 为晶状体测试仪设计了精密直流空心杯电机解决方案，可帮助测试仪平稳运行、精确测量，并保证测试仪的长寿命与高可靠性。

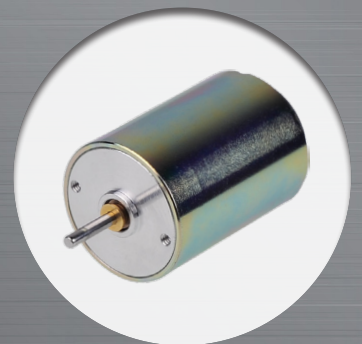
Constar provides a precision DC coreless motor solution for use on crystalline lens testers, ensuring that the tester runs smoothly and provides accurate measurement, and has extended service life and high reliability.



#### 产品选择

#### Product Selection

电机 Motor	尺寸 Dimension (mm)	技术 Technology	电压 Voltage (V)	连续运行 Continuous Operation		
				最大转矩 Max. Torque (mNm)	最高转速 Max. Speed (rpm)	最大电流 Max. Current (mA)
0816N5M	φ8*16	有刷直流 Brush DC	3.0	0.2	8650	110
1220N5M2B	φ12*21	有刷直流 Brush DC	6.0	1.0	9000	220
2232N5M	φ22*32	有刷直流 Brush DC	12.0	5.0	3500	250



## OTHER MEDICAL APPLICATIONS

### 其他医疗应用

Constar 电机还成功应用于其他众多医疗解决方案中，为多种医疗器械提供动力支持。

Constar's motors are also successfully applied to multiple other medical solutions as well to offer drive support for various medical instruments.

雾化器  
Atomizer

手术灯  
Surgical Light

血液清洁仪器  
Blood Purifier

营养泵  
Feeding Pump

蠕动泵  
Peristaltic Pump

生化分析仪  
Biochemical Analyzer

根管治疗仪  
Root Canal Apex Locator

吸奶器  
Breast Pump

药品搅拌器  
Medicine Agitator

氧疗机  
Oxygen Respirator

血压计  
Blood Pressure Monitor

纹身机  
Tattoo Machine

辅助康复治疗（平衡）  
Adjuvant Rehabilitation (Balance)

涡旋混匀器  
Vortex Mixer

牙科设备  
Dental Equipment

基因测序设备  
DNA Sequencing Equipment

胃肠蠕动器  
Gastrointestinal Peristalsis Device

口腔正畸辅助治疗仪  
Oral Orthodontics Therapeutic  
Equipment



心电图机  
Electrocardiogram Machine

医用清洗设备生化分析仪  
Medical Cleaning Equipment

康复系统  
Rehabilitation System

纹眉机  
Eyebrow Tattooing Equipment

帕金森矫正仪  
Parkinson's Disease Therapeutic  
Equipment

眼部测试仪  
Eye Tester

诊断分析仪  
Diagnostic Analyzer

生物检测仪  
Biological Detector

一次性手术缝合器  
Disposable Surgical Stapler

一次性感染测试仪  
Disposable Infection Tester

一次性传播检测仪器  
Disposable STD Tester

.....



## CONTACT

### 联系方式

#### 亚洲 /Asia

##### 深圳市德达兴驱动科技有限公司

地址：深圳市光明区马田街道马山头社区钟表基地瑞辉大厦  
603、5楼501

邮编：518106

电话：+86-755-27351975

传真：+86-755-82049529

邮箱：szcxd@constarmotor.com

##### CONSTAR MOTION CO.,LTD

Add: Suite 603 & 501, Ruihui Building, Mashantou Community  
Clock&Watch Base, Matian Subdistrict, Guangming District,  
Shenzhen, China

P.C: 518106

Tel: +86-755-27351975

Fax: +86-755-82049529

E-mail: szcxd@constarmotor.com

##### 深圳市仓兴达科技有限公司

地址：深圳市福田区车公庙天安科技园大厦 A701 房

邮编：518040

电话：+86-755-27351975

传真：+86-755-82049529

邮箱：szcxd@constarmotor.com

##### CONSTAR MICROMOTOR CO., LTD

Add: Room 701, Tower A, Futian Tian'an Hi-Tech Venture Park,  
Futian District, Shenzhen, China

P.C: 518040

Tel: +86-755-27351975

Fax: +86-755-82049529

E-mail: szcxd@constarmotor.com

##### 重庆市仓兴达科技有限公司

地址：重庆市涪陵区新城区聚龙大道 133 号

##### CONSTAR MICROMOTOR (CHONGQING) CO.,LTD

Add: No.133, Julong Road, New Town, Fuling District, Chongqing,  
China

##### 同美企业股份有限公司 (台湾总公司)

地址：24355 新北市泰山區新北大道六段 399 號 2 樓

电话：+886-2-29021522

传真：+886-2-29071076

邮箱：service@tongmei.com.tw

##### TOUNG MEI CORPORATION

Add: 2F., No.399, Sec.6, New Taipei Blvd., TaiShan Dist., New  
Taipei City 24355, Taiwan

Tel: +886-2-29021522

Fax: +886-2-29071076

E-mail: service@tongmei.com.tw

##### 同美 (香港) 有限公司

地址：香港九龍灣宏冠道 6 號鴻力工業中心 B 座 9 樓 921 室

电话：+852-2755 9977

传真：+852-8148 0441

邮箱：tongmei@tongmei.com.hk

##### TOUNG MEI (HK) CO. LTD.

Add: Unit 21, 9/F, Block B, Proficient Industrial Centre, 6 Wang  
Kwun Road, Kowloon Bay, Hong Kong

Tel: +852-2755 9977

Fax: +852-2305 2909

E-mail: tongmei@tongmei.com.hk

##### 同美仓兴 (深圳) 科技有限公司 (深圳分公司)

地址：深圳市光明鳳凰街道東坑社區樂府廣場 2 號 2508

電話：+86-755-23919455

傳真：+86-755-23487313

郵箱：service@tongmei.com.tw

##### TOUNG MEI CANG XING (SHENZHEN) TECHNOLOGY CORPORATION

Add: Room 2508, No.2, Yuefu Square, Dongkeng Community,  
Fenghuang Street, Guangming District, Shenzhen City,  
Guangdong, China 518107

Tel: +86-755-23919455

Fax: +86-755-23487313

E-mail: service@tongmei.com.tw



## 欧洲 /Europe

### **KOCO MOTION GmbH**

Add: Niedereschacher Str.54 78083 Dauchingen Germany

Tel: +49 7720 995858-0

Fax: +49 7720 995858-99

E-mail: [info@kocomotion.de](mailto:info@kocomotion.de)

### **KOCO automotive GmbH**

Add: Niedereschacher Str. 52 78083 Dauchingen Germany

Tel: +49 7720 995164-2

Fax: +49 7720 995164-9

E-mail: [info@kocoautomotive.de](mailto:info@kocoautomotive.de)

### **F&C Solutions S.r.l.**

Add: Via 1 Maggio, 97 - 20863 - CONCOREZZO (MB) - Italy

Tel: +39 039-2110318

Fax: +39 039-2110318

E-mail: [info@fcsolutions.it](mailto:info@fcsolutions.it)

### **NetivTech Ltd**

Add: Kibbutz Netiv Halamed-Hey, Israel 9985500

Tel: +972-2-9900560

E-mail: [info@netivtech.com](mailto:info@netivtech.com)

## 美洲 /America

### **KOCO DC-MOTION, Inc.**

Add: 20676 Carrey Road Walnut, CA 91789(LA County), U.S.A

Tel: (909) 468-9877

E-mail: [k.oda@kocodcmotion.com](mailto:k.oda@kocodcmotion.com)

深圳市德达兴驱动科技有限公司  
深圳市仓兴达科技有限公司  
CONSTAR MOTION CO., LTD  
CONSTAR MICROMOTOR CO., LTD

[www.constarmotor.com](http://www.constarmotor.com)

深圳市光明区马田街道马山头社区钟表基地瑞辉大厦 603、5 楼 501  
Suite 603 & 501, Ruihui Building, Mashantou Community Clock  
& Watch Base, Matian Subdistrict, Guangming District,  
Shenzhen, China

Tel: +86-755-27351975 Fax: +86-755-82049529  
E-mail: [szcxd@constarmotor.com](mailto:szcxd@constarmotor.com)