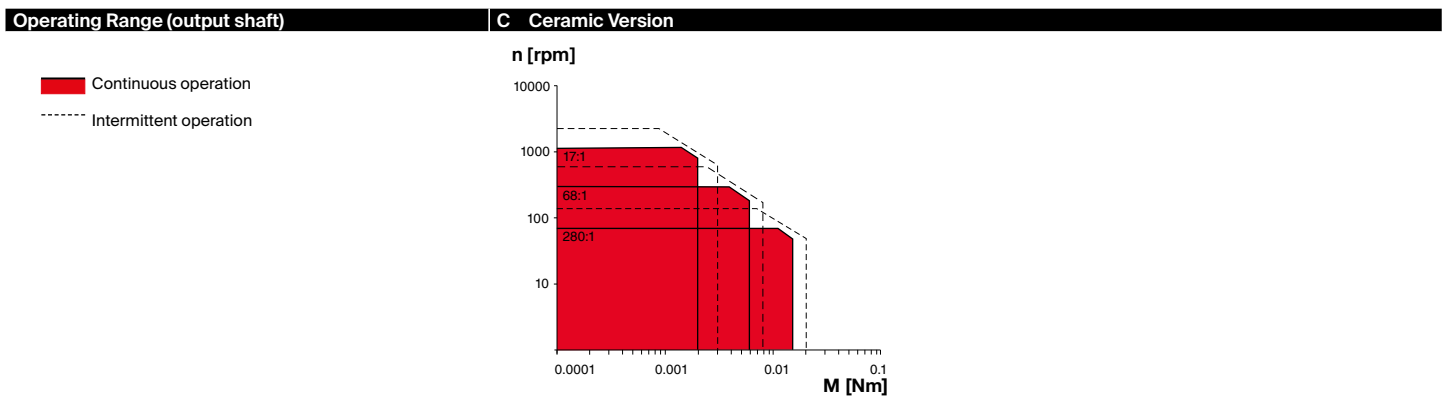


GPX 4 Ø4 mm, planetary gearhead

GPX



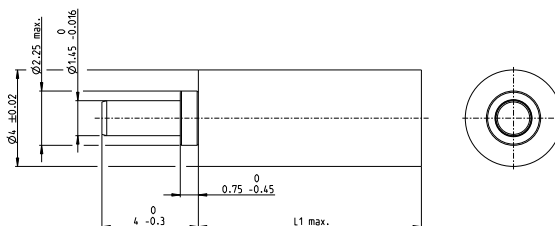
Key Data		C Ceramic Version
Max. transmittable power	W	0.17
Max. continuous torque	Nm	0.015
Max. continuous input speed	rpm	20 000
Ambient temperature	°C	-15 ... +80
Bearing at output		Sleeve bearing



Specifications		C Ceramic Version		
		2	3	4
Number of stages		2	3	4
Max. transmittable power (continuous)	W	0.17	0.12	0.08
Max. transmittable power (intermittent)	W	0.21	0.15	0.10
Max. continuous torque	Nm	0.002	0.006	0.015
Max. intermittent torque	Nm	0.003	0.008	0.020
Max. continuous input speed	rpm	20 000	20 000	20 000
Max. intermittent input speed	rpm	40 000	40 000	40 000
Max. efficiency	%	76	70	65
Average backlash no load	°	5	5	5
Max. axial load (dynamic)	N	5	5	5
Max. radial load, 4 mm from flange	N	3	4	4
Gearhead length L ¹	mm	9.3	11.0	12.7
Weight	g	0.4	0.5	0.6

Configuration		C Ceramic Version		
		2	3	4
Number of stages		2	3	4
Reduction	X:1	17	68	280
Absolute reduction: (see online)				
Version		Ceramic Version		
Flange		Standard flange		
Shaft		with/without flat face		

maxon Modular System		Page	Dimensions	M 3:1
maxon EC motor	Nº of stages [opt.]			
ECX SPEED 4 M	2-4	181		
ECX SPEED 4 L	2-4	182		



¹This length may vary depending on the configuration and choice of motor. The effective length is calculated at the end of the configuration process.

gpx.maxongroup.com