



Linear Actuator Planetary Roller Screw



Jiangsu Kaiserdrive Intelligent Technology Co., Ltd.

Version Number: KTH202512



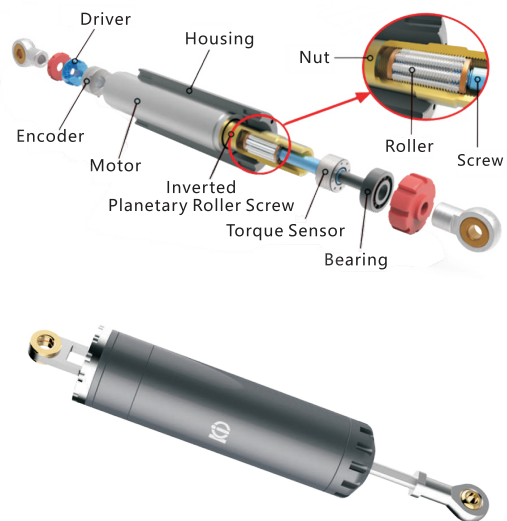
» Company profile

As a subsidiary of Leader Harmonious Drive Svstems Co.. Ltd, and hiah-tech enterorise specializedin the R&D, production and sales of intelligent drive products, the Company mainly produces rotaryactuator, linear actuator,planetary roller screw,CNC rotary table (the 4th and 5th axis), integrated geamotor, EtherCAT servo drive, frameless toraue motor, a of which are used for precision machine toolaser processing device, electronics and semiconductor equipment, factory automation systems,medicaapparatus and instruments, robot, logistics automation system, solar photovoltaic system, LED equipmentdetection device, printing machinery, precision measuring instrument and other fields.

With a strong focus on independent innovation, the Company has established a core R&D team consistingof more than 50 doctors, masters and experts in inteligent control field and it has also established closedcooperation relationship with many institutions, and colleges and universities such as Chinese Academvof Sciences, Tsinohua Wniversity, Southeast University and Naning Wniversity of Aeronautics and AstronauticsIt has obtained several invention and patent authorizations for its core technigue and passed CE and ETIcertifications, With more than 100.000 set/year intelligent automatic production line, the Company hasestablished a strict guality management system and passed 1S09001 system certification. The Company hasexported its products to more than 20 countries and regions, such as Germany, UK, taly, France, US. japan.Korea and the products are well received by customers.

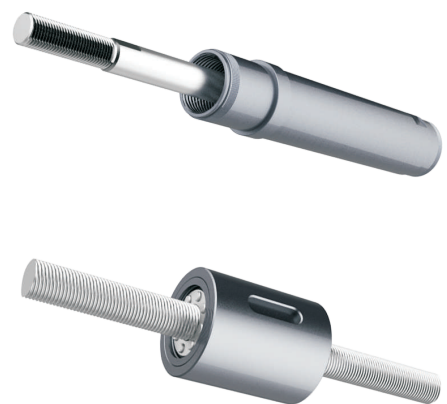
Linear Actuator

- **Integration:** Linear actuator is an integrated assembly of planetary roller screws, frameless torque motors, servo drives, encoders, force sensors, and other components, enabling precise linear motion control.
- **High Precision:** Micron-level positioning accuracy
- **Intelligence:** Force/position hybrid control
- **Heavy Load:** Ton-class load capacity
- **High Density:** Force density up to 4500 N/kg or higher
- **Long Travel:** Maximum drive range exceeding 1 meter
- **High Dynamics:** Maximum acceleration of over 3g



Planetary Roller Screw

- **High Efficiency:** Transmission efficiency of over 87%
- **Long Service Life:** Fatigue-resistant manufacturing process for an ultra-long service life
- **Stability:** Unique surface strengthening and lubrication technology ensures consistent performance even after 10 million cycles of nut operation
- **Long Travel:** Nut aspect ratio of over 7:1, enabling compact-size and ultra-long drive applications
- **Full Product Range:** Full product range with a maximum nominal diameter of over 150 mm and a maximum dynamic load capacity of over 220 tons
- **Customization:** Full closed-loop independent control capability from design, manufacturing to testing, supporting in-depth customization



Application area

- | | | |
|----------------------|----------------------|-----------------------------|
| ● Robot | ● Factory Automation | ● Injection Molding Machine |
| ● New Energy Vehicle | ● CNC Machine Tool | ● Measuring Instrument |
| ● Medical Industry | ● Logistics Industry | ● Optical Equipment |

Linear actuator

Order Number							
KTH-070	L	B	E	N	F	—	Y001
①	②	③	④	⑤	⑥	⑦	⑧
Main Model	Function Options						

① Internal Screw Type

KTH: Planetary Roller Screw

② Maximum Outer Diameter

070: 70mm (Multiple Specifications Available)

③ Working Voltage

L: DC48V

S: DC72V

T: DC24V

M: AC220V

④ Encoder Communication Protocol

B: Biss-C Protocol

T: TAMAGAWA Protocol

F: Nikon Format-A Protocol

X: Other Protocols

⑤ Drive Communication Protocol

E: EtherCAT

C: CANopen

⑥ Brake Options

N: Brake Without Power-Off Hold Function

A: Brake with Power-Off Hold Function

⑦ Force Sensor Options

N: Without Force Sensor

F: With Force Sensor

⑧ Structural Code

Y001~Y999: Variant Structures of Reverse Planetary Roller Screws

X001~X999: Variant Structures of Standard Planetary Roller Screws

KTH Series Linear Actuator



Model: KTH-030LBENF-Y001
 Load: Maximum Thrust 600N
 Speed: Maximum Line Speed 200mm/s
 Outer Diameter: Maximum Diameter 30mm
 Travel: Maximum Travel 40mm
 Lead Screw: Lead 1.8mm, 3 Starts
 Drive: EtherCAT



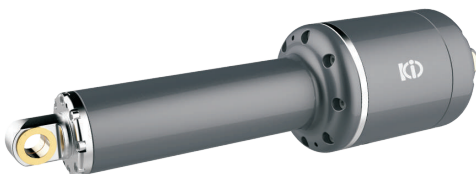
Model: KTH-047LBENF-Y001
 Load: Maximum Thrust 2000N
 Speed: Maximum Line Speed 350mm/s
 Outer Diameter: Maximum Diameter 47mm
 Travel: Maximum Travel 75mm
 Lead Screw: Lead 4.5mm, 3 Starts
 Drive: EtherCAT



Model: KTH-060LBENF-Y001
 Load: Maximum Thrust 4500N
 Speed: Maximum Line Speed 450mm/s
 Outer Diameter: Maximum Diameter 60mm
 Travel: Maximum Travel 85mm
 Lead Screw: Lead 6mm, 3 Starts
 Drive: EtherCAT



Model: KTH-068LBENF-Y001
 Load: Maximum Thrust 8500N
 Speed: Maximum Line Speed 650mm/s
 Outer Diameter: Maximum Diameter 68mm
 Travel: Maximum Travel 115mm
 Lead Screw: Lead 8mm, 3 Starts
 Drive: EtherCAT



Model: KTH-065LBENF-Y001
 Load: Maximum Thrust 3000N
 Speed: Maximum Line Speed 300mm/s
 Outer Diameter: Maximum Diameter 65mm
 Travel: Maximum Travel 119mm
 Lead Screw: Lead 3mm, 3 Starts
 Drive: EtherCAT



Model: KTH-110MBENF-Y001
 Load: Maximum Thrust 20000N
 Speed: Maximum Line Speed 500mm/s
 Outer Diameter: Maximum Diameter 110mm
 Travel: Maximum Travel 170mm
 Lead Screw: Lead 5mm, 3 Starts
 Drive: External 220V EtherCAT

Planetary roller screw

Order Number														
KSR-18-3	—	350	—	230	—	1	—	8	—	0	—	R	—	1
①	②	③	④	⑤	⑥	⑦	⑧	⑨	⑩					
Main Model				Function Options										

① Lead Screw Type

KSR:Reverse-Type KSF:Standard-Type

② Lead Screw Diameter

18: 18mm (Multiple Specifications Available)

③ Lead

3: 3mm (Multiple Specifications Available)

④ Nut Length

350: 350mm (Multiple Specifications Available)

⑤ Maximum Travel

230: 230mm (Multiple Specifications Available)

⑥ Nut Type

- 1: Single Nut
- 2: Preloaded Nut

⑦ Nut Shape

- 1: Cylindrical Nut Design
- 6: Single-Side Flange Nut Design
- 7: Middle Flange Nut Design
- 8: Customized Non-Standard Nut Design



⑧ Sealing Option

- 0: No Wiper
- 1: With Wiper

⑨ Thread Direction

R: Right-hand L: Left-hand

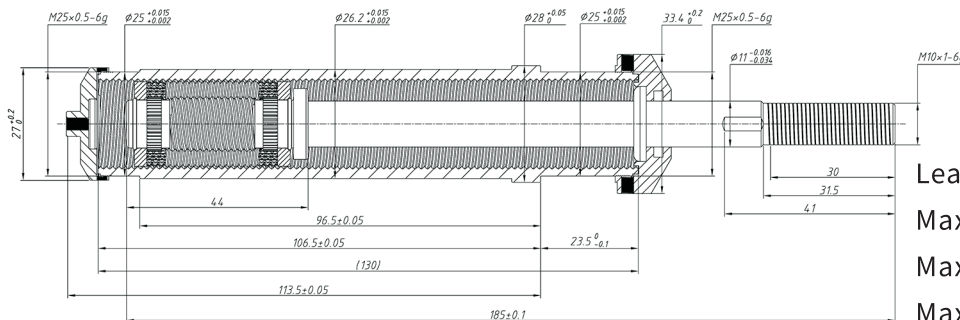
⑩ Accuracy Class

0: P0 1: P1 2: P2 3: P3

Note: The test standard for accuracy class refers to JB/T 12604-2016 or GB/T 17587.3-2017.

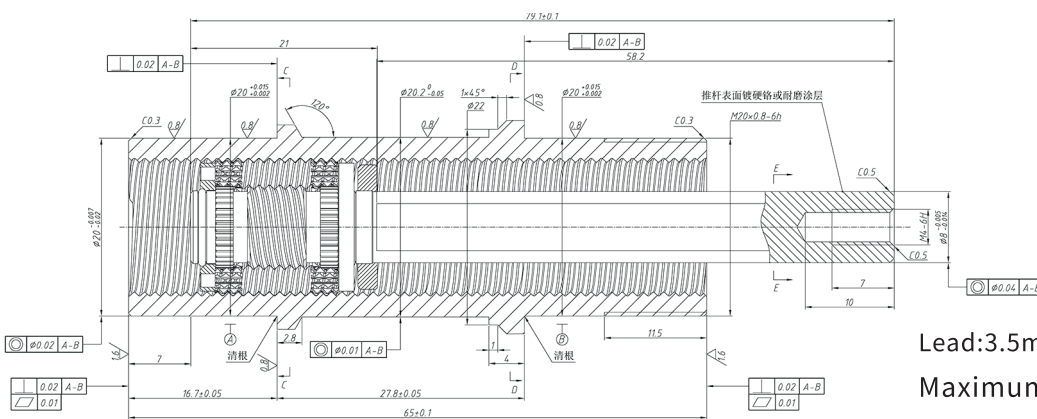
KSR Series Reverse-Type Planetary Roller Screw

Model	Nominal Diameter	Lead	Thread Starts	Minimum Nut Outer Diameter	Nut Inner Diameter	Maximum Travel	Maximum Push Rod Outer Diameter	Dynamic Load Capacity	Static Load Capacity	Stiffness Coefficient	Forward Rotation Efficiency	Reverse Rotation Efficiency	Axial Clearance
/	mm	mm	/	mm	mm	mm	mm	kN	kN	N ^{2/3} /μm	/	/	mm
KSR-5-1.8	5	1.8	3	12	8	46	4.4	0.8	1.5	31.6	0.83	0.82	0.015
KSR-9-3.5	9	3.5	3	20	14	77	4.4	11.5	17.8	44.9	0.85	0.83	0.015
KSR-10-3	10	3	3	22	16	86	5	12.6	23.9	34.4	0.86	0.84	0.015
KSR-12-1	12	1	3	25	20	105	10	14.5	27.9	54.2	0.82	0.81	0.020
KSR-12-2	12	2	3	25	20	105	10	17.2	28.2	38.5	0.85	0.83	0.020
KSR-12-3	12	3	3	25	20	110	10	17.9	29.6	36.7	0.87	0.85	0.020
KSR-12-5	12	3	3	25	20	105	10	18.6	27.8	34.2	0.86	0.85	0.020
KSR-13-1	13	1	3	30	21	113	11	16.6	28.5	58.3	0.81	0.8	0.020
KSR-13-2	13	2	3	30	21	110	11	18.5	29.8	38.4	0.83	0.81	0.020
KSR-13-3	13	3	3	30	21	106.5	11	19.1	30.9	36.7	0.87	0.84	0.020
KSR-13-4.5	13	4.5	3	30	21	112	11	19.9	31.5	35.4	0.87	0.85	0.020
KSR-13-6	13	6	3	30	21	106.5	11	21.7	30.8	31.5	0.85	0.84	0.020
KSR-15-3	15	3	3	33	25	135	13	30.2	51.1	40.7	0.86	0.83	0.025
KSR-15-5	15	5	3	33	25	130	13	32.8	53.1	38.7	0.87	0.85	0.025
KSR-15-6.5	15	6.5	3	33	25	125	13	33.6	55.9	35.7	0.86	0.84	0.025
KSR-15-8	15	8	3	33	25	120	13	31.5	52.7	33.1	0.86	0.83	0.025
KSR-18-3	18	3	3	38	30	160	16	39.1	73.4	48.5	0.84	0.82	0.025



Lead:1.8mm
Maximum Travel:40mm
Maximum Dynamic Load:0.8kN
Maximum Static Load:1.5kN

Model: KSR-5-1.8-52-40-1-8-0-R-3-00Z-Z

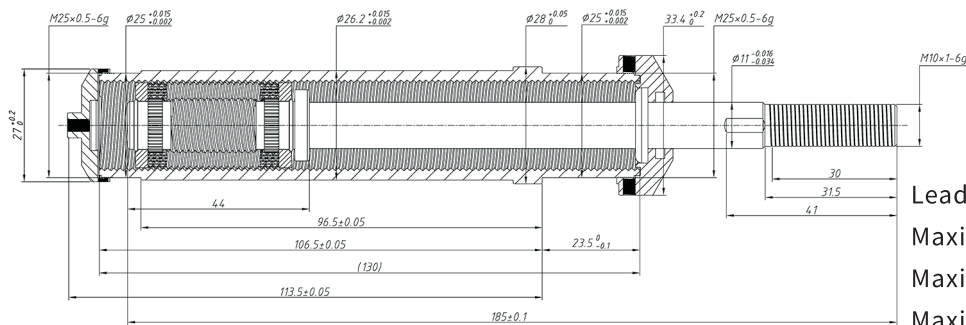


Lead:3.5mm
Maximum Trave:65mm
Maximum Dynamic Load:11.5kN
Maximum Static Load:17.8kN

Model: KSR-9-3.5-65-44-1-8-0-R-1-00Z-Z

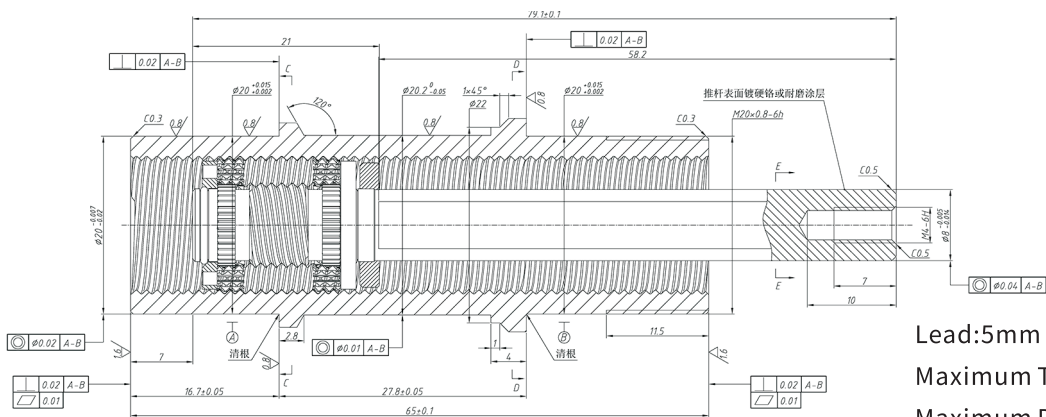
KSR Series Reverse-Type Planetary Roller Screw

Model	Nominal Diameter	Lead	Thread Starts	Minimum Nut Outer Diameter	Nut Inner Diameter	Maximum Travel	Maximum Push Rod Outer Diameter	Dynamic Load Capacity	Static Load Capacity	Stiffness Coefficient	Forward Rotation Efficiency	Reverse Rotation Efficiency	Axial Clearance
/	mm	mm	/	mm	mm	mm	mm	kN	kN	N ^{2/3} /μm	/	/	mm
KSR-18-5	18	5	3	38	30	158	16	39.1	61.3	46.3	0.85	0.83	0.025
KSR-18-6	18	6	3	38	30	155	16	41.8	64.1	44.6	0.86	0.85	0.025
KSR-18-9	18	9	3	38	30	150	16	41.1	61.6	41.2	0.85	0.84	0.025
KSR-21-4	21	4	3	45	35	186	18	65.5	107.6	48.1	0.83	0.81	0.025
KSR-21-5	21	5	3	45	35	183	18	63.7	95.5	46.7	0.87	0.84	0.025
KSR-21-6	21	6	3	45	35	180	18	66.4	95.4	44.7	0.87	0.85	0.025
KSR-21-10	21	10	3	45	35	175	18	64.9	90.7	42	0.86	0.83	0.025
KSR-24-4	24	4	3	50	40	215	21	90.7	167.7	58.8	0.85	0.82	0.030
KSR-24-5	24	5	3	50	40	212	21	95.3	168.2	52.7	0.86	0.85	0.030
KSR-24-6	24	6	3	50	40	210	21	98.6	184.6	49.9	0.87	0.83	0.030
KSR-24-10	24	10	3	50	40	205	21	96.9	171.5	43.6	0.86	0.84	0.030
KSR-27-5	27	5	3	55	45	249	24	101.3	179.5	53.2	0.85	0.82	0.030
KSR-27-10	27	10	3	55	45	245	24	111.5	194.6	47.6	0.86	0.84	0.030
KSR-27-12	27	12	3	55	45	240	24	102.1	178.4	41.9	0.85	0.82	0.030
KSR-30-5	30	5	3	60	50	285	27	122.4	225.1	58.5	0.85	0.82	0.030
KSR-30-6	30	6	3	60	50	282	27	130.3	232.6	54.3	0.86	0.85	0.030
KSR-30-9	30	9	3	60	50	280	27	139.5	244.1	48.4	0.86	0.84	0.030



Lead:3mm
 Maximum Travel:80mm
 Maximum Dynamic Load:17.9kN
 Maximum Static Load:29.6kN

Model: KSR-12-3-125-80-1-8-0-R-1-00Z-Z

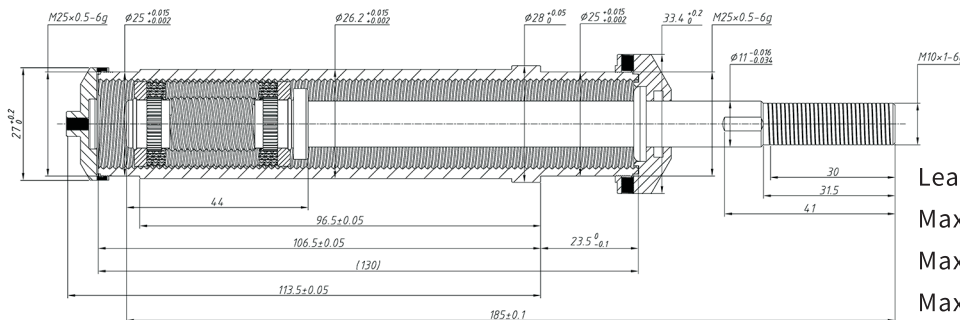


Lead:5mm
 Maximum Travel:73mm
 Maximum Dynamic Load:18.6kN
 Maximum Static Load:27.8kN

Model: KSR-12-5-110-73-1-8-0-R-3-00Z-Z

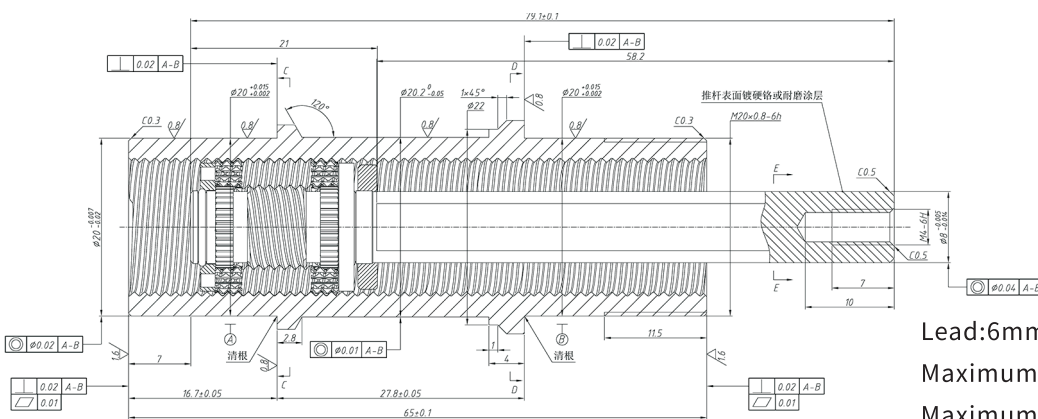
KSR Series Reverse-Type Planetary Roller Screw

Model	Nominal Diameter	Lead	Thread Starts	Minimum Nut Outer Diameter	Nut Inner Diameter	Maximum Travel	Maximum Push Rod Outer Diameter	Dynamic Load Capacity	Static Load Capacity	Stiffness Coefficient	Forward Rotation Efficiency	Reverse Rotation Efficiency	Axial Clearance
/	mm	mm	/	mm	mm	mm	mm	kN	kN	N ^{2/3} /μm	/	/	mm
KSR-30-12	30	12	3	60	50	275	27	131.5	232.5	43.8	0.85	0.83	0.030
KSR-36-5	36	5	4	64	54	310	33	109.1	214.8	69.5	0.84	0.82	0.030
KSR-36-6	36	6	4	64	54	308	33	113.1	213.8	62.9	0.84	0.83	0.030
KSR-36-7	36	7	4	64	54	305	33	120.7	222.2	59.1	0.86	0.84	0.030
KSR-39-5	39	5	4	75	65	383	36	182.3	374.8	72.6	0.85	0.82	0.030
KSR-39-6	39	6	4	75	65	380	36	189.6	372.6	65.7	0.87	0.86	0.035
KSR-39-7	39	7	4	75	65	380	36	197.8	376.4	60.9	0.85	0.83	0.035
KSR-39-8	39	8	4	75	65	375	36	205.2	380.2	57.4	0.83	0.81	0.035
KSR-44-6	44	6	4	76	66	372	40	160.9	339.5	76.7	0.84	0.82	0.035
KSR-44-7	44	7	4	76	66	370	40	170.5	350.1	71.9	0.86	0.84	0.035
KSR-44-8	44	8	4	76	66	370	40	172.4	341	66.2	0.85	0.84	0.035
KSR-44-9	44	9	4	76	66	365	40	175.1	334.2	61.8	0.86	0.84	0.035
KSR-48-6	48	6	4	90	80	465	44	263.9	569.7	79.8	0.84	0.82	0.040
KSR-48-7	48	7	4	90	80	462	44	267.4	548.9	71.4	0.85	0.83	0.040
KSR-48-8	48	8	4	90	80	460	44	283.4	571.8	68.5	0.87	0.85	0.040
KSR-48-9	48	9	4	90	80	455	44	291.1	572.8	64.1	0.85	0.83	0.040
KSR-48-10	48	10	4	90	80	450	44	291.6	552.2	59.8	0.86	0.84	0.040



Lead:4.5mm
Maximum Travel:85mm
Maximum Dynamic Load:19.5kN
Maximum Static Load:31.5kN

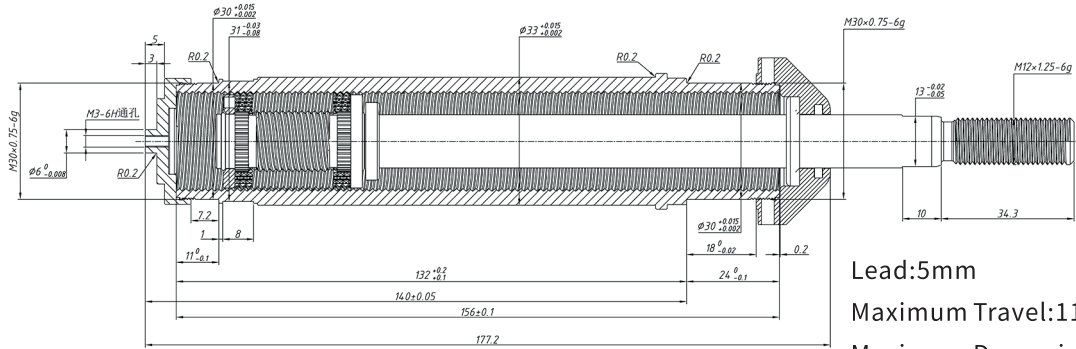
Model: KSR-13-4.5-130-85-1-8-0-R-1-00Z-Z



Lead:6mm
Maximum Travel:85mm
Maximum Dynamic Load:21.7kN
Maximum Static Load:30.8kN

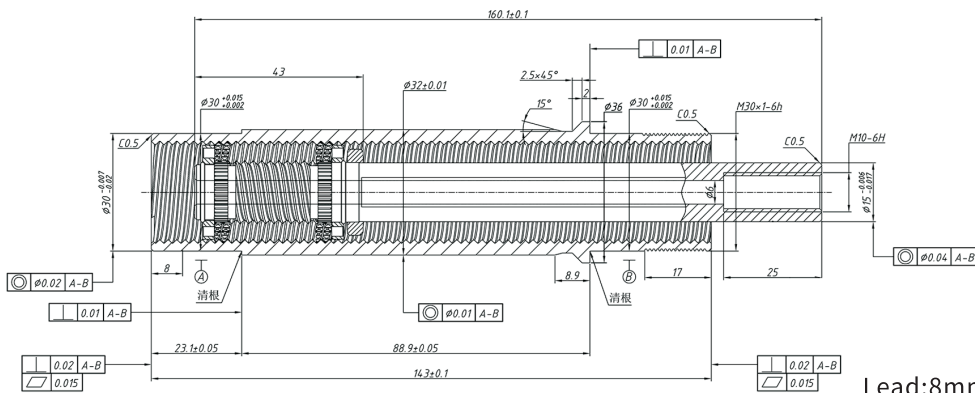
Model: KSR-13-6-130-85-1-8-0-R-3-00Z-Z

KSR Series Reverse-Type Planetary Roller Screw



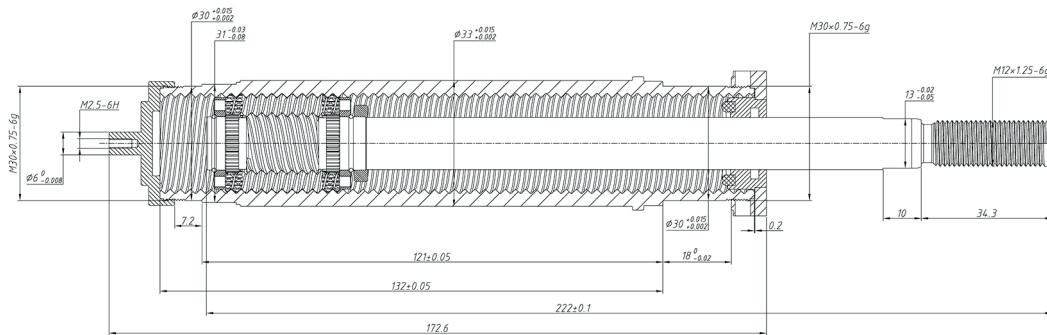
Model: KSR-15-5-156-115-1-8-0-R-3-00Z-Z

Lead:5mm
 Maximum Travel:115mm
 Maximum Dynamic Load:32.8kN
 Maximum Static Load:53.1kN



Model: KSR-15-8-156-115-1-8-0-R-3-00Z-Z

Lead:8mm
 Maximum Travel:115mm
 Maximum Dynamic Load:31.5kN
 Maximum Static Load:52.7kN

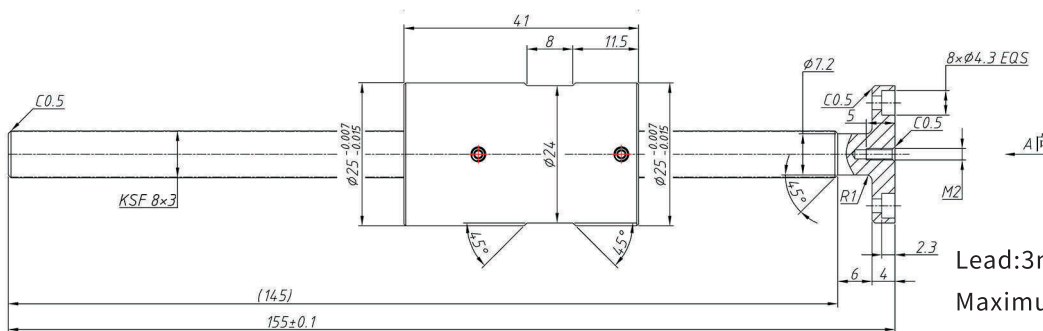


Model: KSR-15-8-156-115-1-8-0-R-3-00Z-Z

Lead:8mm
 Max Stroke:115mm
 Maximum Dynamic Load:31.5kN
 Maximum Static Load:52.7kN

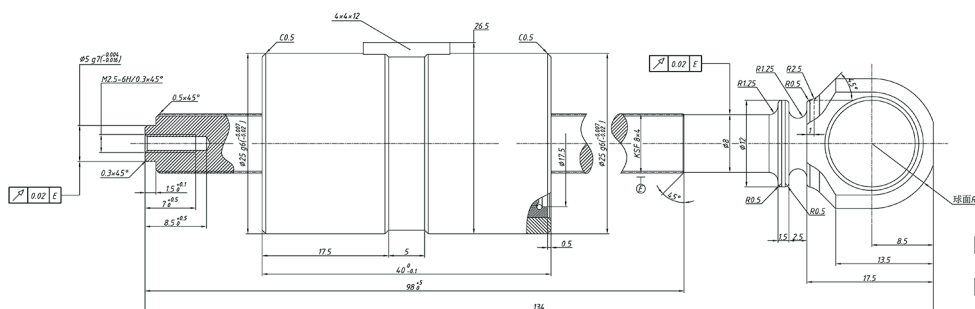
KSF Series Standard-Type Planetary Roller Screw

Model	Nominal Diameter	Lead	Thread Starts	Nut Inner Diameter	Nut Length	Dynamic Load Capacity	Static Load Capacity	Stiffness Coefficient	Forward Rotation Efficiency	Reverse Rotation Efficiency	Axial Clearance
/	mm	mm	/	mm	mm	kN	kN	N ^{2/3} /μm	/	/	mm
KSF-5-1	5	1	3	19	31	5.6	11.8	35.1	35.1	0.83	0.01
KSF-5-2	5	2	3	19	31	5.8	12.2	25.6	25.6	0.84	0.01
KSF-5-4	5	4	3	19	31	6.5	11.7	19.4	19.4	0.86	0.02
KSF-8-2	8	2	4	21	31	9.3	17.3	33.2	33.2	0.82	0.01
KSF-8-3	8	3	4	21	31	10.1	18.5	27.7	27.7	0.85	0.01
KSF-8-4	8	4	4	21	31	10.9	19.6	25.8	25.8	0.85	0.02
KSF-8-5	8	5	4	21	31	11.3	18.7	25.2	25.2	0.85	0.02
KSF-12-4	12	4	5	30	31	17.3	20.5	35.4	35.4	0.84	0.02
KSF-12-5	12	5	5	30	31	17.7	21.7	30.1	30.1	0.85	0.02
KSF-12-10	12	10	5	30	31	18.6	20.9	28.3	28.3	0.85	0.03
KSF-15-2	15	2	5	34	35	15.8	23.1	51.3	51.3	0.83	0.02
KSF-15-4	15	4	5	34	35	25.9	48.3	49.2	49.2	0.84	0.02
KSF-15-5	15	5	5	34	35	27.6	49.2	38.5	38.5	0.85	0.02
KSF-15-6	15	6	5	34	35	28.3	49.8	35.7	35.7	0.86	0.02
KSF-15-8	15	8	5	34	35	29.5	51.2	29.6	29.6	0.86	0.03
KSF-15-10	15	10	5	34	35	30.3	52.4	28.3	28.3	0.86	0.03
KSF-18-3	18	3	5	42	50	31.7	67.5	51.8	51.8	0.83	0.02
KSF-18-5	18	5	5	42	50	37.3	70.9	47.7	47.7	0.85	0.02



Model: KSF-8-3-155-120-1-1-0-R-3-00Z-Z

Lead:3mm
Maximum Travel:120mm
Maximum Dynamic Load:10.1kN
Maximum Static Load:18.5kN

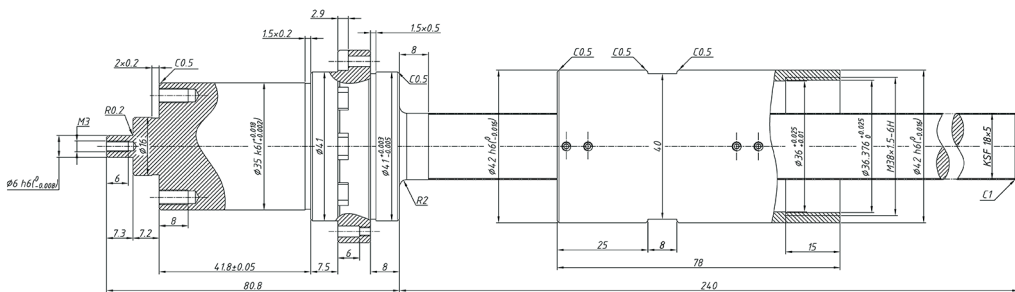


Model: KSF-8-4-134-58-1-1-0-R-1-00Z-Z

Lead:4mm
Maximum Travel:58mm
Maximum Dynamic Load:10.9kN
Maximum Static Load:19.6kN

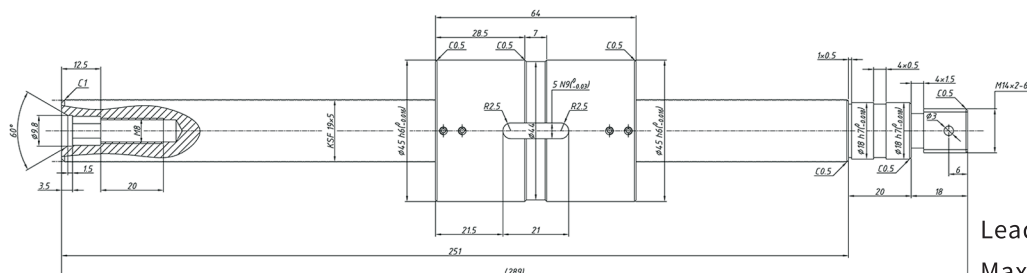
KSF Series Standard-Type Planetary Roller Screw

Model	Nominal Diameter	Lead	Thread Starts	Nut Inner Diameter	Nut Length	Dynamic Load Capacity	Static Load Capacity	Stiffness Coefficient	Forward Rotation Efficiency	Reverse Rotation Efficiency	Axial Clearance
/	mm	mm	/	mm	mm	kN	kN	N ^{2/3} /μm	/	/	mm
KSF-20-5	20	5	5	42	55	41.6	89.7	48.5	0.88	0.86	0.02
KSF-20-6	20	6	5	42	55	46.3	94.7	50.7	0.87	0.85	0.02
KSF-20-10	20	10	5	42	55	48.9	96.3	40.1	0.88	0.86	0.03
KSF-20-12	20	12	5	42	55	52.3	97.1	38.6	0.88	0.86	0.03
KSF-20-20	20	20	5	42	55	54.7	99.5	39.7	0.88	0.87	0.03
KSF-21-2	21	2	5	45	55	35.3	78.6	101	0.83	0.82	0.02
KSF-21-4	21	4	5	45	55	52.6	92.3	68.7	0.84	0.82	0.02
KSF-21-5	21	5	5	45	55	54.5	95.6	60.2	0.86	0.84	0.02
KSF-21-10	21	10	5	45	55	62.4	103.8	39.4	0.88	0.87	0.03
KSF-21-12	21	12	5	45	55	63.7	105.2	36.3	0.88	0.87	0.03
KSF-21-20	21	20	5	45	55	65.8	107.1	32.7	0.88	0.87	0.03
KSF-24-4	24	4	5	48	60	60.1	100.3	64.3	0.84	0.81	0.02
KSF-24-5	24	5	5	48	60	63.3	105.7	61.7	0.85	0.83	0.02
KSF-24-6	24	6	5	48	60	64.1	108.4	54.8	0.86	0.84	0.03
KSF-24-12	24	12	5	48	60	66.7	110.2	49.3	0.88	0.87	0.03
KSF-24-20	24	20	5	48	60	68.2	116.5	40.4	0.88	0.87	0.03
KSF-25-4	25	4	5	53	60	70.4	148.3	69.7	0.83	0.81	0.02
KSF-25-5	25	5	5	53	60	75.6	150.5	63.1	0.85	0.83	0.02



Model: KSF-18-5-321-174-1-1-1-R-3-00Z-ZZ

Lead:5mm
 Maximum Travel:174mm
 Maximum Dynamic Load:37.3kN
 Maximum Static Load:70.9kN

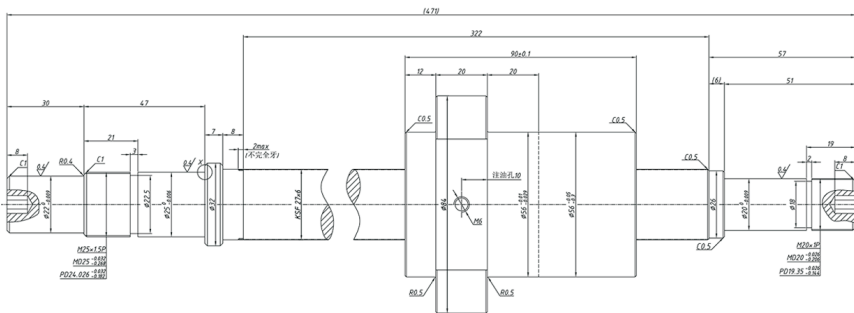


Model: KSF-20-5-289-187-1-1-1-R-3-00Z-Z

Lead:5mm
 Maximum Travel:187mm
 Maximum Dynamic Load:41.6kN
 Maximum Static Load:89.7kN

KSF Series Standard-Type Planetary Roller Screw

Model	Nominal Diameter	Lead	Thread Starts	Nut Inner Diameter	Nut Length	Dynamic Load Capacity	Static Load Capacity	Stiffness Coefficient	Forward Rotation Efficiency	Reverse Rotation Efficiency	Axial Clearance
/	mm	mm	/	mm	mm	kN	kN	N ^{2/3} /μm	/	/	mm
KSF-25-12	25	12	5	53	60	81.9	152.4	42.8	0.88	0.87	0.03
KSF-25-20	25	20	5	53	60	82.5	146.8	38.5	0.88	0.87	0.03
KSF-27-4	27	4	5	56	65	75.7	155.3	73.2	0.83	0.81	0.02
KSF-27-5	27	5	5	56	65	83.5	160.4	70.5	0.84	0.82	0.02
KSF-27-6	27	6	5	56	65	85.1	165.6	63.8	0.85	0.83	0.02
KSF-27-8	27	8	5	56	65	87.4	168.9	59.7	0.86	0.85	0.02
KSF-27-15	27	15	5	56	65	89.5	160.1	50.1	0.88	0.87	0.03
KSF-27-25	27	25	5	56	65	92.8	155.8	47.3	0.88	0.87	0.03
KSF-30-4	30	4	5	62	68	96.4	190.3	79.5	0.82	0.81	0.02
KSF-30-5	30	5	5	62	68	98.5	195.7	77.8	0.84	0.81	0.02
KSF-30-6	30	6	5	62	68	100.2	200.5	71.4	0.85	0.83	0.02
KSF-30-8	30	8	5	62	68	106.8	209.7	69.6	0.86	0.84	0.02
KSF-30-10	30	10	5	62	68	113.5	216.7	57.4	0.87	0.85	0.03
KSF-30-20	30	20	5	62	68	138.9	220.5	37.6	0.88	0.87	0.03
KSF-30-30	30	30	5	62	68	146.8	201.7	32.5	0.88	0.87	0.03
KSF-36-4	36	4	5	75	68	109.5	273.2	91.3	0.83	0.82	0.02
KSF-36-5	36	5	5	75	68	114.5	279.4	83.2	0.83	0.82	0.02
KSF-36-6	36	6	5	75	68	121.6	285.7	78.7	0.84	0.83	0.02



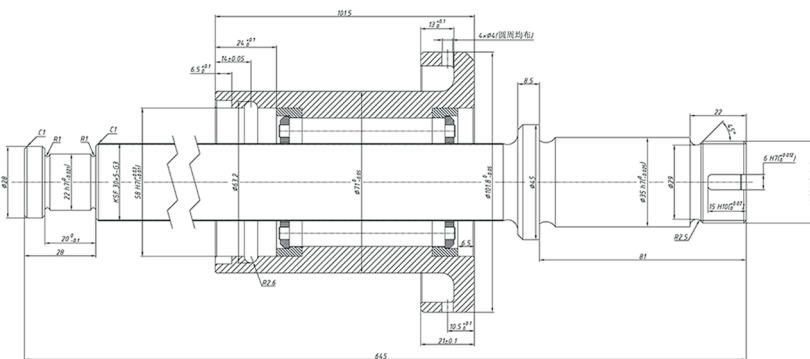
Model: KSF-27-6-471-232-2-7-1-R-1-00Z-Z

Lead:6mm

Maximum Travel:232mm

Maximum Dynamic Load:85.1kN

Maximum Static Load:165.6kN



Model: KSF-30-5-645-426-1-8-0-R-3-00Z-Z

Lead:5mm

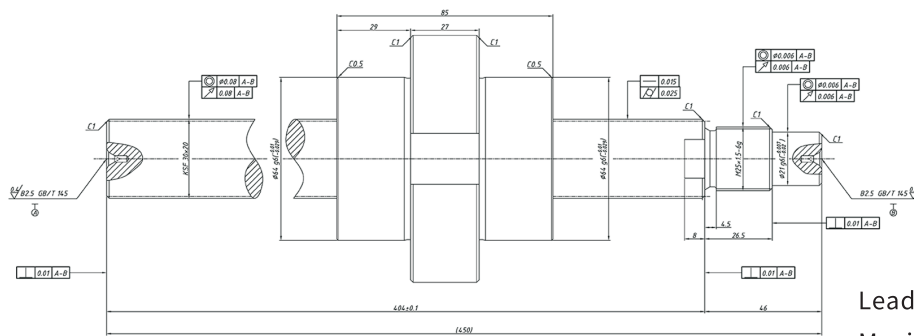
Maximum Travel:426mm

Maximum Dynamic Load:98.5kN

Maximum Static Load:195.7kN

KSF Series Standard-Type Planetary Roller Screw

Model	Nominal Diameter	Lead	Thread Starts	Nut Inner Diameter	Nut Length	Dynamic Load Capacity	Static Load Capacity	Stiffness Coefficient	Forward Rotation Efficiency	Reverse Rotation Efficiency	Axial Clearance
/	mm	mm	/	mm	mm	kN	kN	N ^{2/3} /μm	/	/	mm
KSF-36-8	36	8	5	75	68	125.3	289.9	70.2	0.85	0.83	0.02
KSF-36-10	36	10	5	75	68	135.8	297.7	57.5	0.86	0.85	0.03
KSF-36-20	36	20	5	75	68	156.6	310.9	38.2	0.88	0.87	0.03
KSF-36-30	36	30	5	75	68	158.9	302.6	30.7	0.88	0.87	0.03
KSF-39-5	39	5	5	80	80	135.7	299.8	87.6	0.82	0.79	0.02
KSF-39-10	39	10	5	80	80	167.8	340.7	59.5	0.86	0.84	0.03
KSF-39-20	39	20	5	80	80	190.5	350.4	39.3	0.87	0.86	0.04
KSF-42-10	42	10	5	80	90	180.6	362.8	65.7	0.87	0.85	0.02
KSF-44-12	44	12	6	82	90	183.5	345.7	73.9	0.86	0.85	0.02
KSF-44-18	44	18	6	82	90	190.7	360.3	56.7	0.85	0.84	0.03
KSF-44-24	44	24	6	82	90	201.3	378.6	49.2	0.88	0.87	0.03
KSF-44-30	44	30	6	82	90	207.5	385.2	41.3	0.88	0.87	0.03
KSF-44-36	44	36	6	82	90	210.7	379.5	38.7	0.88	0.88	0.04
KSF-48-5	48	5	5	96	95	173.8	373.5	105.2	0.85	0.83	0.03
KSF-48-10	48	10	5	96	95	206.7	386.4	77.9	0.85	0.83	0.03
KSF-48-20	48	20	5	96	95	236.8	427.6	60.8	0.87	0.86	0.04
KSF-48-30	48	30	5	96	95	248.5	403.7	45.2	0.88	0.87	0.05
KSF-56-12	56	12	6	105	112	216.5	418.9	83.2	0.85	0.83	0.03



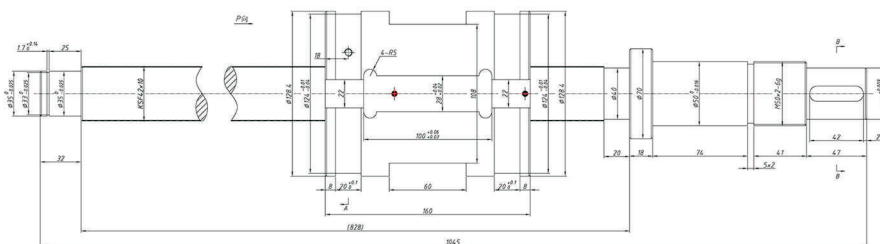
Model: KSF-30-20-450-311-1-7-0-R-3-00Z-Z

Lead:20mm

Maximum Travel:311mm

Maximum Dynamic Load:138.9kN

Maximum Static Load:220.5kN



Model: KSF-42-10-1045-648-1-8-0-R-5-00Z-Z

Lead:10mm

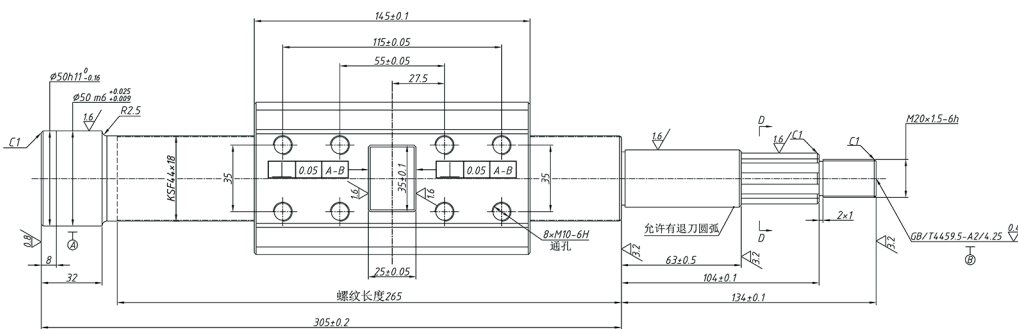
Maximum Travel:648mm

Maximum Dynamic Load:180.6kN

Maximum Static Load:362.8kN

KSF Series Standard-Type Planetary Roller Screw

Model	Nominal Diameter	Lead	Thread Starts	Nut Inner Diameter	Nut Length	Dynamic Load Capacity	Static Load Capacity	Stiffness Coefficient	Forward Rotation Efficiency	Reverse Rotation Efficiency	Axial Clearance
/	mm	mm	/	mm	mm	kN	kN	N ^{2/3} /μm	/	/	mm
KSF-56-24	56	24	6	105	112	239.7	430.7	59.5	0.88	0.86	0.04
KSF-56-30	56	30	6	105	112	250.3	397.9	48.3	0.88	0.87	0.05
KSF-63-5	63	5	5	118	115	248.9	547.5	128.9	0.83	0.81	0.03
KSF-63-10	63	10	5	118	115	279.7	578.9	107.4	0.83	0.81	0.03
KSF-63-15	63	15	5	118	115	292.5	599.4	79.2	0.86	0.84	0.04
KSF-63-20	63	20	5	118	115	316.7	612.6	70.7	0.87	0.85	0.04
KSF-63-30	63	30	5	118	115	327.1	631.5	64.5	0.87	0.87	0.05
KSF-63-40	63	40	5	118	115	359.7	597.8	56.3	0.88	0.87	0.05
KSF-78-10	78	10	6	150	178	451.7	1409	153.6	0.83	0.82	0.03
KSF-78-20	78	20	6	150	178	548.5	1497	130.5	0.86	0.84	0.05
KSF-78-30	78	30	6	150	178	579.6	1355	96.3	0.87	0.86	0.06
KSF-90-10	90	10	6	175	245	725	1829	196.2	0.83	0.82	0.04
KSF-90-15	90	15	6	175	245	801	2857	169.7	0.84	0.82	0.05
KSF-90-20	90	20	6	175	245	867	2996	138.6	0.85	0.83	0.05
KSF-90-25	90	25	6	175	245	882	2905	119.7	0.86	0.85	0.06
KSF-100-20	100	20	5	200	260	1218	3325	156.7	0.85	0.83	0.05
KSF-100-25	100	25	5	200	260	1245	3398	142.8	0.86	0.84	0.06
KSF-100-50	100	50	5	200	260	1297	3215	98.9	0.86	0.85	0.06
KSF-120-20	120	20	5	260	280	1156	3578	137.8	0.84	0.81	0.05
KSF-120-25	120	25	5	260	280	1193	3482	124.4	0.85	0.83	0.05
KSF-135-20	135	20	5	280	370	1901	7958	199.7	0.83	0.81	0.06
KSF-135-30	135	30	5	280	370	1946.2	7746	158.3	0.84	0.83	0.06
KSF-150-25	150	25	5	320	412	2106	8805	198.7	0.84	0.81	0.05
KSF-150-30	150	30	5	320	412	2173	8728	178.2	0.86	0.84	0.06
KSF-150-40	150	40	5	320	412	2215	8529	158.5	0.86	0.85	0.06



Model: KSF-44-18-439-120-1-8-0-R-3-00Z-Z

Lead:18mm

Maximum Travel:120mm

Maximum Dynamic Load:190.7kN

Maximum Static Load:360.3kN



Jiangsu Kaiserdrive Intelligent Technology Co., Ltd.

E-mail: sales@kaiserdrive.com

TEL: 0512-65563897

Add: NO.68 YaoFeng West Road,WuzhongDistrict,Suzhou,China

Web: www.kaiserdrive.com